

For Research Use Only

CoraLite® Plus 488-conjugated 14-3-3 Epsilon Polyclonal antibody



Catalog Number: CL488-11648

Featured Product

Basic Information

Catalog Number:
CL488-11648

Size:
100ul, Concentration: 1000 µg/ml by
Nanodrop;

Source:
Rabbit

Isotype:
IgG

Immunogen Catalog Number:
AG2247

GenBank Accession Number:
BC000179

GeneID (NCBI):
7531

Full Name:
tyrosine 3-
monooxygenase/tryptophan 5-
monooxygenase activation protein,
epsilon polypeptide

Calculated MW:
255 aa, 29 kDa

Observed MW:
29-32 kDa

Purification Method:
Antigen affinity purification

Excitation/Emission maxima
wavelengths:
488 nm / 515 nm

Applications

Tested Applications:
FC (Intra)

Species Specificity:
human, mouse, rat

Background Information

14-3-3 Epsilon (also known as YWHAE) is a member of 14-3-3 proteins which were the first phosphoserine/phosphothreonine-binding proteins to be discovered. 14-3-3 family members interact with a wide spectrum of proteins and possess diverse functions. Mammals express seven distinct 14-3-3 isoforms (gamma, epsilon, beta, zeta, sigma, theta, tau) that form multiple homo- and hetero- dimers. 14-3-3 proteins display the highest expression levels in the brain, and have been implicated in several neurodegenerative diseases, including Alzheimer's disease and amyotrophic lateral sclerosis. This antibody was raised against full-length 14-3-3 Epsilon.

Storage

Storage:

Store at -20°C. Avoid exposure to light. Stable for one year after shipment.

Storage Buffer:

PBS with 50% Glycerol, 0.05% Proclin300, 0.5% BSA, pH 7.3.

Aliquoting is unnecessary for -20°C storage

*** 20ul sizes contain 0.1% BSA

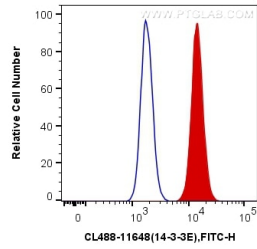
For technical support and original validation data for this product please contact:

T: 1 (888) 4PTGLAB (1-888-478-4522) (toll free
in USA), or 1(312) 455-8498 (outside USA)

E: proteintech@ptglab.com
W: ptglab.com

This product is exclusively available under Proteintech Group brand and is not available to purchase from any other manufacturer.

Selected Validation Data



1X10⁶ HepG2 cells were intracellularly stained with 0.4 ug CoraLite® Plus 488 Anti-Human 14-3-3 Epsilon (CL488-11648) (red), or 0.4 ug Control Antibody. Cells were fixed with 4% PFA and permeabilized with Flow Cytometry Perm Buffer (PF00011-C).