

For Research Use Only

CoraLite® Plus 488-conjugated PDI Polyclonal antibody



Catalog Number: **CL488-11245**

Featured Product

Basic Information

Catalog Number: CL488-11245	GenBank Accession Number: BC014504	Purification Method: Antigen affinity purification
Size: 100ul , Concentration: 1000 µg/ml by Nanodrop;	GeneID (NCBI): 5034	Recommended Dilutions: IF 1:50-1:500
Source: Rabbit	Full Name: prolyl 4-hydroxylase, beta polypeptide	Excitation/Emission maxima wavelengths: 488 nm / 515 nm
Isotype: IgG	Calculated MW: 57 kDa	
Immunogen Catalog Number: AG1747	Observed MW: 57 kDa	

Applications

Tested Applications: IF	Positive Controls: IF : HepG2 cells,
Species Specificity: human, mouse, rat	

Background Information

PDIA1(Protein disulfide-isomerase) is also named as ERBA2L, PDI, P4HB, PO4DB. It is a multifunctional protein that catalyzes the formation, breakage and rearrangement of disulfide bonds. In some cell types, it seems to be secreted or associated with the plasma membrane, where it undergoes constant shedding and replacement from intracellular sources. It can exist as homodimer and monomers and homotetramers may also occur(PMID:12095988).

Storage

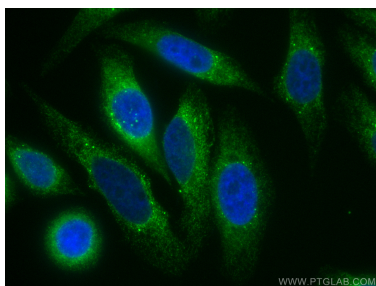
Storage:
Store at -20°C. Avoid exposure to light.
Storage Buffer:
PBS with 50% Glycerol, 0.05% Proclin300, 0.5% BSA, pH 7.3.
Aliquoting is unnecessary for -20°C storage

*** 20ul sizes contain 0.1% BSA

For technical support and original validation data for this product please contact:
T: 1 (888) 4PTGLAB (1-888-478-4522) (toll free in USA), or 1(312) 455-8498 (outside USA)
E: proteintech@ptglab.com
W: ptglab.com

This product is exclusively available under Proteintech Group brand and is not available to purchase from any other manufacturer.

Selected Validation Data



Immunofluorescent analysis of (4% PFA) fixed HepG2 cells using Coralite® Plus 488 PDI antibody (CL488-11245) at dilution of 1:200.