

For Research Use Only

CoraLite® Plus 488-conjugated MECP2 Polyclonal antibody



Catalog Number: CL488-10861

Featured Product

Basic Information

Catalog Number:

CL488-10861

Size:

100ul, Concentration: 1000 µg/ml by
Nanodrop;

Source:

Rabbit

Isotype:

IgG

Immunogen Catalog Number:

AG1309

GenBank Accession Number:

BC011612

GeneID (NCBI):

4204

UNIPROT ID:

P51608

Full Name:

methyl CpG binding protein 2 (Rett
syndrome)

Calculated MW:

52 kDa, 53 kDa

Observed MW:

75 kDa

Purification Method:

Antigen Affinity Purified

Recommended Dilutions:

IF/ICC 1:50-1:500

Excitation/Emission maxima
wavelengths:

493 nm / 522 nm

Applications

Tested Applications:

IF/ICC, FC (Intra)

Species Specificity:

human, mouse

Positive Controls:

IF/ICC : HepG2 cells,

Background Information

METHYL-CpG-BINDING PROTEIN 2 (MECP2), is a chromatin-associated protein that can both activate and repress transcription. Mecp2 in the adult mouse is high in the brain, lung, and spleen, lower in heart and kidney. MECP2 takes part in the control of neuronal activity-dependent gene regulation, and this process may underlie the pathology of Rett syndrome, a severe developmental disorder with autistic phenotypes. As compared to wild-type monkeys, MECP2 transgenic monkeys exhibited a higher frequency of repetitive circular locomotion and increased stress responses, as measured by the threat-related anxiety and defensive test. Chromosomal protein that binds to methylated DNA. It can bind specifically to a single methyl-CpG pair. It is not influenced by sequences flanking the methyl-CpGs. Mediates transcriptional repression through interaction with histone deacetylase and the corepressor SIN3A. Two isoforms of MECP2 exist due to alternative splicing events. This antibody reacts with the MECP2 and phosphorylated MECP2 proteins. The calculated molecular weight of MECP2 is a 52 kDa, but the post-modified MECP2 protein is about 75-80 kDa (PMID: 12160743).

Storage

Storage:

Store at -20°C. Avoid exposure to light.

Storage Buffer:

PBS with 50% Glycerol, 0.05% Proclin300, 0.5% BSA, pH 7.3.

Aliquoting is unnecessary for -20°C storage

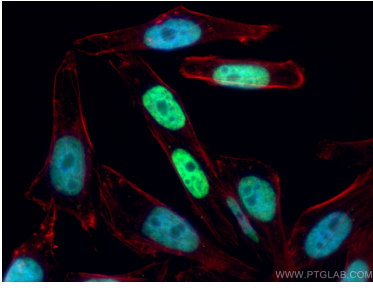
For technical support and original validation data for this product please contact:

T: 1 (888) 4PTGLAB (1-888-478-4522) (toll free
in USA), or 1(312) 455-8498 (outside USA)

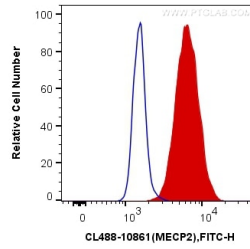
E: proteintech@ptglab.com
W: ptglab.com

This product is exclusively available under Proteintech Group brand and is not available to purchase from any other manufacturer.

Selected Validation Data



Immunofluorescent analysis of (4% PFA) fixed HepG2 cells using CoraLite® Plus 488 MECP2 antibody (CL488-10861) at dilution of 1:100, CL594-Phalloidin (red).



1X10⁶ NIH/3T3 cells were intracellularly stained with 0.2 ug CoraLite® Plus 488 Anti-Human MECP2 (CL488-10861) (red), or 0.2 ug Control Antibody. Cells were fixed and permeabilized with Transcription Factor Staining Buffer Kit (PF00011).