

For Research Use Only

CoraLite® Plus 488-conjugated CLTA Polyclonal antibody



Catalog Number: CL488-10852

Featured Product

Basic Information

Catalog Number: CL488-10852	GenBank Accession Number: BC019287	Purification Method: Antigen affinity purification
Size: 100ul , Concentration: 1000 µg/ml by Nanodrop;	GeneID (NCBI): 1211	Recommended Dilutions: IF 1:50-1:500
Source: Rabbit	Full Name: clathrin, light chain (Lca)	Excitation/Emission maxima wavelengths: 488 nm / 515 nm
Isotype: IgG	Calculated MW: 27 kDa	
Immunogen Catalog Number: AG1299	Observed MW: 35-38 kDa	

Applications

Tested Applications: IF	Positive Controls: IF : HepG2 cells,
Species Specificity: human, mouse, rat	

Background Information

Clathrin is the major protein of the polyhedral coat of coated pits and vesicles which entrap specific macromolecules during receptor-mediated endocytosis. The clathrin molecule has a triskelion shape. Each clathrin triskelion is composed of three identical heavy chains (180 kDa) and three light chains of two types, LCA (CLTA) and LCB (CLTB) (30-40 kDa). The light chain subunits are thought to regulate the formation or disassembly of clathrin coats. (PMID: 2445759; 8374173; 3563513)

Storage

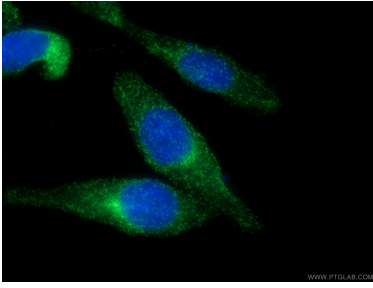
Storage:
Store at -20°C. Avoid exposure to light.
Storage Buffer:
PBS with 50% Glycerol, 0.05% Proclin300, 0.5% BSA, pH 7.3.
Aliquoting is unnecessary for -20°C storage

*** 20ul sizes contain 0.1% BSA

For technical support and original validation data for this product please contact:
T: 1 (888) 4PTGLAB (1-888-478-4522) (toll free in USA), or 1(312) 455-8498 (outside USA)
E: proteintech@ptglab.com
W: ptglab.com

This product is exclusively available under Proteintech Group brand and is not available to purchase from any other manufacturer.

Selected Validation Data



Immunofluorescent analysis of (4% PFA) fixed HepG2 cells using Coralite® Plus 488 CLTA antibody (CL488-10852) at dilution of 1:200.