

For Research Use Only

CoraLite® Plus 488-conjugated Cystatin B Polyclonal antibody

Catalog Number:CL488-10823

Featured Product



Basic Information

Catalog Number:

CL488-10823

Size:

100ul , Concentration: 1000 ug/ml by Nanodrop;

Source:

Rabbit

Isotype:

IgG

Immunogen Catalog Number:

AG1262

GenBank Accession Number:

BC003370

GeneID (NCBI):

1476

UNIPROT ID:

P04080

Full Name:

cystatin B (stefin B)

Calculated MW:

11 kDa

Observed MW:

11 kDa

Purification Method:

Antigen Affinity Purified

Recommended Dilutions:

IF/ICC 1:50-1:500

Excitation/Emission maxima wavelengths:

493 nm / 522 nm

Applications

Tested Applications:

IF/ICC, FC (Intra)

Species Specificity:

human

Positive Controls:

IF/ICC : A431 cells,

Background Information

Cystatin B (CSTB), a member of the cystatin superfamily protein, is a stefin that functions as an intracellular thiol protease inhibitor and has been thought to play a role in protecting against the proteases leaking from lysosomes. CSTB plays various functions in a variety of diseases, including epithelial ovarian cancer, colon cancer, and myoclonus epilepsy. Evidence indicates that mutations in CSTB are responsible for the primary defects in patients with progressive myoclonic epilepsy (EPM1). One type of mutation responsible for EPM1 is the expansion in the promoter region of this gene of a CCCCCCCCCG repeat from 2-3 copies to 30-78 copies.

Storage

Storage:

Store at -20°C. Avoid exposure to light. Stable for one year after shipment.

Storage Buffer:

PBS with 50% Glycerol, 0.05% Proclin300, 0.5% BSA, pH 7.3.

Aliquoting is unnecessary for -20°C storage

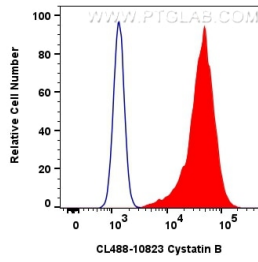
For technical support and original validation data for this product please contact:

T: 1 (888) 4PTGLAB (1-888-478-4522) (toll free in USA), or 1(312) 455-8498 (outside USA)

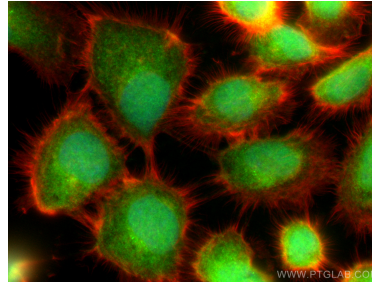
E: proteintech@ptglab.com
W: ptglab.com

This product is exclusively available under Proteintech Group brand and is not available to purchase from any other manufacturer.

Selected Validation Data



1×10^6 MCF-7 cells were intracellularly stained with 0.8 μ g CoraLite® Plus 488 Cystatin B Polyclonal Antibody (CL488-10823)(red), or 0.8 μ g CoraLite® Plus 488-conjugated Rabbit IgG control Rabbit PolyAb (CL488-30000) (blue). Cells were fixed with 4% PFA and permeabilized with Flow Cytometry Perm Buffer (PF00011-C).



Immunofluorescent analysis of (4% PFA) fixed A431 cells using CoraLite® Plus 488 Cystatin B antibody (CL488-10823) at dilution of 1:200, CL594-Phalloidin (red).