

For Research Use Only

CoraLite® Plus 488-conjugated ENOX2 Polyclonal antibody

Catalog Number:CL488-10423

Featured Product



Basic Information

Catalog Number: CL488-10423	GenBank Accession Number: BC019254	Purification Method: Antigen affinity purification
Size: 100ul , Concentration: 1000 ug/ml by Nanodrop;	GeneID (NCBI): 10495	Recommended Dilutions: IF/ICC 1:50-1:500
Source: Rabbit	UNIPROT ID: Q16206	Excitation/Emission maxima wavelengths: 493 nm / 522 nm
Isotype: IgG	Full Name: ecto-NOX disulfide-thiol exchanger 2	
Immunogen Catalog Number: AG0674	Calculated MW: 70 kDa	
	Observed MW: 70 kDa	

Applications

Tested Applications: IF/ICC, FC (Intra)	Positive Controls: IF/ICC : MCF-7 cells,
Species Specificity: human, mouse	

Background Information

Tumor-associated NADH oxidase (ENOX2) as a member of a family of growth-related NADH (or hydroquinone) oxidases. It functions as a terminal oxidase of plasma electron transport from cytosolic NAD(P)H via hydroquinones to acceptors at the cell surface. Hydroquinone oxidase activity alternates with a protein disulfide-thiol interchange/oxidoreductase activity which may control physical membrane displacements associated with vesicle budding or cell enlargement. The activities oscillate with a period length of 22 minutes and play a role in control of the ultradian cellular biological clock

Storage

Storage:
Store at -20°C. Avoid exposure to light. Stable for one year after shipment.
Storage Buffer:
PBS with 50% Glycerol, 0.05% Proclin300, 0.5% BSA, pH 7.3.
Aliquoting is unnecessary for -20°C storage

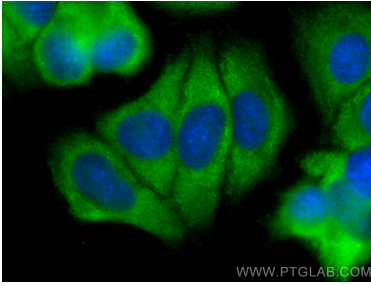
For technical support and original validation data for this product please contact:

T: 1 (888) 4PTGLAB (1-888-478-4522) (toll free in USA), or 1(312) 455-8498 (outside USA)

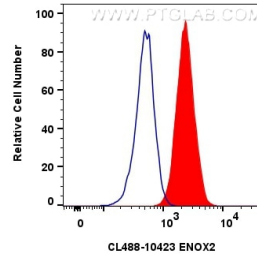
E: proteintech@ptglab.com
W: ptglab.com

This product is exclusively available under Proteintech Group brand and is not available to purchase from any other manufacturer.

Selected Validation Data



Immunofluorescent analysis of (-20°C Methanol) fixed MCF-7 cells using CoraLite® Plus 488 ENOX2 antibody (CL488-10423) at dilution of 1:200.



1x10⁶ MCF-7 cells were intracellularly stained with 0.8 ug CoraLite® Plus 488-conjugated ENOX2 Polyclonal antibody (CL488-10423)(red), or 0.8 ug CoraLite® Plus 488-conjugated Rabbit IgG control Rabbit PolyAb (CL488-30000) (blue). Cells were fixed with 4% PFA and permeabilized with Flow Cytometry Perm Buffer (PF00011-C).