

For Research Use Only

CoraLite® Plus 488-conjugated CPLX1 Polyclonal antibody

Catalog Number:CL488-10246



Basic Information

Catalog Number: CL488-10246	GenBank Accession Number: BC002471	Purification Method: Antigen affinity purification
Size: 100ul , Concentration: 1000 ug/ml by Nanodrop;	GeneID (NCBI): 10815	Recommended Dilutions: IF/ICC 1:50-1:500
Source: Rabbit	UNIPROT ID: O14810	Excitation/Emission maxima wavelengths: 493 nm / 522 nm
Isotype: IgG	Full Name: complexin 1	
Immunogen Catalog Number: AG0387	Calculated MW: 15 kDa	
	Observed MW: 15-20 kDa	

Applications

Tested Applications: IF/ICC, FC (Intra)	Positive Controls: IF/ICC : SH-SY5Y cells,
Species Specificity: human, mouse, rat	

Background Information

Complexin 1 (CPLX1) is a member of the complexin/synaphin gene family, which are cytosolic proteins that function in synaptic vesicle exocytosis. Complexins are enriched in neurons where they colocalize with syntaxin and SNAP-25. Complexins bind weakly to syntaxin alone and not at all to synaptobrevin and SNAP-25, but strongly to the SNAP receptor-core complex composed of these three molecules. Complexins also compete with alpha-SNAP for binding to the core complex but not with other interacting molecules, including synaptotagmin I, and regulate the sequential interactions of alpha-SNAP and synaptotagmins with the SNAP receptor during exocytosis. CLPX1 binds to the SNAP receptor complex and disrupts it, leading to the release of transmitters. Alterations of complexins may contribute to the molecular substrate for abnormalities of neural connectivity in severe mental disorders.

Storage

Storage:
Store at -20°C. Avoid exposure to light. Stable for one year after shipment.
Storage Buffer:
PBS with 50% Glycerol, 0.05% Proclin300, 0.5% BSA, pH 7.3.
Aliquoting is unnecessary for -20°C storage

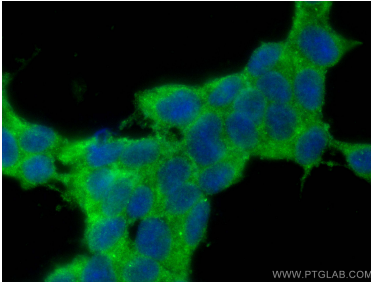
For technical support and original validation data for this product please contact:

T: 1 (888) 4PTGLAB (1-888-478-4522) (toll free
in USA), or 1(312) 455-8498 (outside USA)

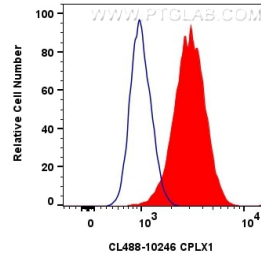
E: proteintech@ptglab.com
W: ptglab.com

This product is exclusively available under Proteintech Group brand and is not available to purchase from any other manufacturer.

Selected Validation Data



Immunofluorescent analysis of (-20°C Ethanol) fixed SH-SY5Y cells using CoraLite® Plus 488 CPLX1 antibody (CL488-10246) at dilution of 1:200.



1x10⁶ SH-SY5Y cells were intracellularly stained with 0.8 ug CoraLite® Plus 488 Cplx1 Polyclonal Antibody (CL488-10246)(red), or 0.8 ug CoraLite® Plus 488-conjugated Rabbit IgG control Rabbit PolyAb (CL488-30000) (blue). Cells were fixed with 4% PFA and permeabilized with Flow Cytometry Perm Buffer (PF00011-C).