

For Research Use Only

# CoraLite® Plus 405 Anti-Mouse CD86 Rabbit Recombinant Antibody



Catalog Number: CL405-98025

## Basic Information

Catalog Number:

CL405-98025

Size:

100ug , 500 µg/ml

Source:

Rabbit

Isotype:

IgG

GenBank Accession Number:

NM\_019388

GeneID (NCBI):

12524

UNIPROT ID:

P42082-1

Full Name:

CD86 antigen

Calculated MW:

35 kDa

Purification Method:

Protein A purification

CloneNo.:

230476B8

Excitation/Emission maxima wavelengths:

399 nm / 422 nm

## Applications

Tested Applications:

FC

Species Specificity:

mouse

## Background Information

CD86 (also known as B7-2) is a costimulatory molecule belonging to the immunoglobulin superfamily. Primarily expressed on antigen-presenting cells (APCs), including B cells, dendritic cells, and macrophages, CD86 is the ligand for two proteins at the cell surface of T cells, CD28 antigen and CTLA-4. Binding of CD86 with CD28 antigen is a costimulatory signal for activation of the T-cell. Binding of CD86 with CTLA-4 negatively regulates T-cell activation and diminishes the immune response. (PMID: 7513726; 1847722; 11029388; 27591335)

## Storage

Storage:

Store at 2-8°C. Avoid exposure to light.

Storage Buffer:

PBS with 0.09% sodium azide.

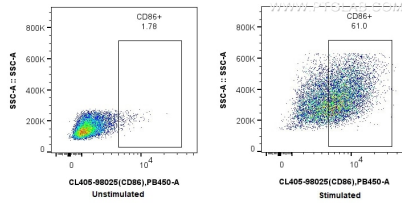
For technical support and original validation data for this product please contact:

T: 1 (888) 4PTGLAB (1-888-478-4522) (toll free in USA), or 1(312) 455-8498 (outside USA)

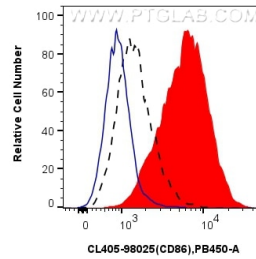
E: [proteintech@ptglab.com](mailto:proteintech@ptglab.com)  
W: [ptglab.com](http://ptglab.com)

This product is exclusively available under Proteintech Group brand and is not available to purchase from any other manufacturer.

## Selected Validation Data



1x10<sup>6</sup> untreated or LPS-treated mouse splenocytes were surface stained with 0.25 ug CoraLite® Plus 405 Anti-Mouse CD86 Rabbit Recombinant Antibody (CL405-98025, Clone: 230476B8). Cells were not fixed.



1x10<sup>6</sup> LPS treated mouse splenocytes were surface stained with 0.25 ug CoraLite® Plus 405 Anti-Mouse CD86 Rabbit Recombinant Antibody (CL405-98025, Clone: 230476B8) (red), or 0.25 ug Isotype Control (blue). 1x10<sup>6</sup> LPS treated mouse splenocytes were surface stained with 0.25 ug CoraLite® Plus 405 Anti-Mouse CD86 Rabbit Recombinant Antibody (CL405-98025, Clone: 230476B8) (black, dash). Cells were not fixed.