

For Research Use Only

# CoraLite® Plus 405 Anti-Human DPP4/CD26 (BA5b) Mouse IgG2a Recombinant Antibody

Catalog Number: CL405-65574



## Basic Information

<b>Catalog Number:</b> CL405-65574	<b>GenBank Accession Number:</b> BC013329	<b>Purification Method:</b> Protein A purification
<b>Size:</b> 100tests , 5 µl/test	<b>GeneID (NCBI):</b> 1803	<b>CloneNo.:</b> BA5b
<b>Source:</b> Mouse	<b>Full Name:</b> dipeptidyl-peptidase 4	<b>Excitation/Emission maxima wavelengths:</b> 399 nm / 422 nm
<b>Isotype:</b> IgG2a	<b>Calculated MW:</b> 88 kDa	

## Applications

**Tested Applications:**  
FC

**Species Specificity:**  
human

## Background Information

CD26, also known as DPP4 (dipeptidyl peptidase-4), is a 110 kDa type II cell-surface glycoprotein widely expressed on T cells, activated B cells, activated NK cells and myeloid cells as well as on epithelial cells, fibroblasts, mesothelium, and endothelial cells of a variety of tissues (PMID:33777580; 26919392). It has ecto-enzyme activity in its extracellular domain and cleaves amino-terminal dipeptides with either L-proline or L-alanine at the penultimate position (PMID: 9553764). CD26 plays roles in diverse biological processes such as immunoregulation, glucose homeostasis, and tumorigenesis (PMID: 33777580).

## Storage

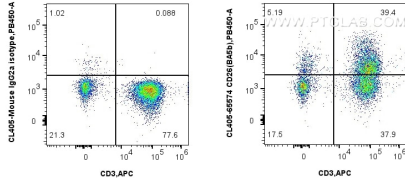
**Storage:**  
Store at 2-8°C. Avoid exposure to light. Stable for one year after shipment.

**Storage Buffer:**  
PBS with 0.09% sodium azide and 0.5% BSA.

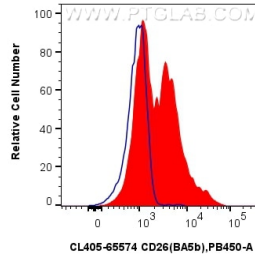
For technical support and original validation data for this product please contact:  
T: 1 (888) 4PTGLAB (1-888-478-4522) (toll free in USA), or 1(312) 455-8498 (outside USA)      E: proteintech@ptglab.com  
W: ptglab.com

This product is exclusively available under Proteintech Group brand and is not available to purchase from any other manufacturer.

## Selected Validation Data



1x10<sup>6</sup> human PBMCs were surface stained with APC Anti-Human CD3 and 5 ul CoraLite® Plus 405 Anti-Human CD26 (BA5b) Mouse IgG2a Recombinant Antibody (CL405-65574, Clone: BA5b) (right), or CoraLite® Plus 405 Mouse IgG2a Isotype Control (C1.18.4) (CL405-65208, Clone: C1.18.4) (left). Cells were not fixed. Lymphocytes were gated



1x10<sup>6</sup> human PBMCs were surface stained with 5 ul CoraLite® Plus 405 Anti-Human CD26 (BA5b) Mouse IgG2a Recombinant Antibody (CL405-65574, Clone: BA5b) (red), or CoraLite® Plus 405 Mouse IgG2a Isotype Control (C1.18.4) (CL405-65208, Clone: C1.18.4) (blue). Cells were not fixed. Lymphocytes were gated. Lymphocytes were gated.