

For Research Use Only

# CoraLite® Plus 405 Anti-Human CD3 (UCHT1) Mouse IgG2a Recombinant Antibody

Catalog Number: CL405-65570



## Basic Information

Catalog Number:

CL405-65570

Size:

100tests , 5 µl/test

Source:

Mouse

Isotype:

IgG2a

GenBank Accession Number:

BC049847

GeneID (NCBI):

916

ENSEMBL Gene ID:

ENSG00000198851

Full Name:

CD3e molecule, epsilon (CD3-TCR complex)

Calculated MW:

207 aa, 23 kDa

Purification Method:

Protein A purification

CloneNo.:

UCHT1

Excitation/Emission maxima wavelengths:

399 nm / 422 nm

## Applications

Tested Applications:

FC

Species Specificity:

human

## Background Information

CD3 is a multimeric protein associated with the T-cell receptor (TCR) to form a complex involved in antigen recognition and signal transduction (PMID: 15885124). CD3 is composed of CD3γ, δ, ε, and ζ chains (PMID: 1826255). It is expressed by thymocytes in a developmentally regulated manner, T cells, and some NK cells (PMID: 3289580). The TCR recognizes antigens bound to major histocompatibility complex (MHC) molecules. TCR-mediated peptide-MHC recognition is transmitted to the CD3 complex, leading to the intracellular signal transduction (PMID: 11985657).

## Storage

Storage:

Store at 2-8°C. Avoid exposure to light. Stable for one year after shipment.

Storage Buffer:

PBS with 0.09% sodium azide and 0.5% BSA.

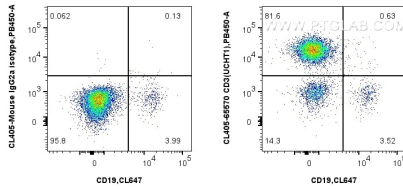
For technical support and original validation data for this product please contact:

T: 1 (888) 4PTGLAB (1-888-478-4522) (toll free in USA), or 1(312) 455-8498 (outside USA)

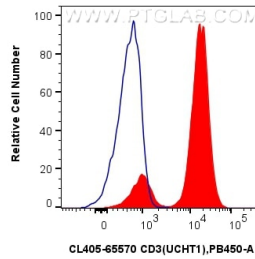
E: [proteintech@ptglab.com](mailto:proteintech@ptglab.com)  
W: [ptglab.com](http://ptglab.com)

This product is exclusively available under Proteintech Group brand and is not available to purchase from any other manufacturer.

## Selected Validation Data



1x10<sup>6</sup> human PBMCs were surface stained with CoraLite® Plus 647 Anti-Human CD19 and 5 ul CoraLite® Plus 405 Anti-Human CD3 (UCHT1) Mouse IgG2a Recombinant Antibody (CL405-65570, Clone: UCHT1) (right), or CoraLite® Plus 405 Mouse IgG2a Isotype Control (C.1.18.4) (CL405-65208, Clone: C.1.18.4) (left). Cells were not fixed. Lymphocytes were gated.



1x10<sup>6</sup> human PBMCs were surface stained with 5 ul CoraLite® Plus 405 Anti-Human CD3 (UCHT1) Mouse IgG2a Recombinant Antibody (CL405-65570, Clone: UCHT1)(red), or CoraLite® Plus 405 Mouse IgG2a Isotype Control (C.1.18.4) (CL405-65208, Clone: C.1.18.4) (blue). Cells were not fixed. Lymphocytes were gated.