

For Research Use Only

# CoraLite® Plus 405 Anti-Human CD11c (3.9) Mouse IgG2a Recombinant Antibody

Catalog Number: CL405-65568



## Basic Information

**Catalog Number:**

CL405-65568

**Size:**

100 tests, 5 ul/test

**Source:**

Mouse

**Isotype:**

IgG2a

**GenBank Accession Number:**

BC038237

**GeneID (NCBI):**

3687

**ENSEMBL Gene ID:**

ENSG00000140678

**Full Name:**

integrin, alpha X (complement component 3 receptor 4 subunit)

**Calculated MW:**

1169 aa, 129 kDa

**Purification Method:**

Protein A purification

**CloneNo.:**

3.9

**Excitation/Emission maxima wavelengths:**

399 nm / 422 nm

## Applications

**Tested Applications:**

FC

**Species Specificity:**

human

## Background Information

Integrins are cell adhesion receptors that are heterodimers composed of non-covalently associated  $\alpha$  and  $\beta$  subunits (PMID: 9779984). CD11c, also known as integrin  $\alpha X$ , is a type I transmembrane glycoprotein present on a variety of cells, including monocytes/macrophages, granulocytes, a subset of B cells, NK cells and dendritic cells (PMID: 2897326; 1680915; 1694698; 17389580). As a result of its high level of expression on most dendritic cells, CD11c is typically considered to be a marker of conventional dendritic cells (PMID: 27119555). CD11c forms an  $\alpha/\beta$  heterodimer with CD18 (integrin  $\beta 2$ ). CD11c/CD18 acts a receptor for fibrinogen and is important in monocyte adhesion and chemotaxis (PMID: 1671533).

## Storage

**Storage:**

Store at 2-8°C. Avoid exposure to light. Stable for one year after shipment.

**Storage Buffer:**

PBS with 0.09% sodium azide and 0.5% BSA.

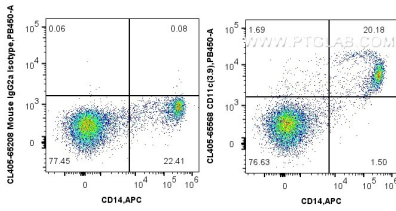
For technical support and original validation data for this product please contact:

T: 1 (888) 4PTGLAB (1-888-478-4522) (toll free in USA), or 1(312) 455-8498 (outside USA)

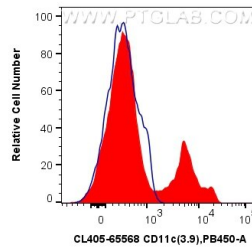
E: [proteintech@ptglab.com](mailto:proteintech@ptglab.com)  
W: [ptglab.com](http://ptglab.com)

**This product is exclusively available under Proteintech Group brand and is not available to purchase from any other manufacturer.**

## Selected Validation Data



1x10<sup>6</sup> human PBMCs were surface stained with APC Anti-Human CD14, and 5 ul CoraLite® Plus 405 Anti-Human CD11c (3.9) Mouse IgG2a RecAb (CL405-65568, Clone: 3.9) or CoraLite® Plus 405 Mouse IgG2a Isotype Control (C1.18.4) (CL405-65208, Clone: C1.18.4). Cells were incubated with FC Receptor Block prior to staining. Cells were not fixed.



1x10<sup>6</sup> human PBMCs were surface stained with 5 ul CoraLite® Plus 405 Anti-Human CD11c (3.9) Mouse IgG2a RecAb (CL405-65568, Clone:3.9) (red) or CoraLite® Plus 405 Mouse IgG2a Isotype Control (C1.18.4) (CL405-65208, Clone: C1.18.4) (blue). Cells were incubated with FC Receptor Block prior to staining. Cells were not fixed.