

For Research Use Only

CoraLite® Plus 405 Anti-Human CD107b / LAMP2 (H4B4) Mouse IgG2a Recombinant Antibody

Catalog Number: CL405-65566



Basic Information

Catalog Number: CL405-65566	GenBank Accession Number: BC002965	Purification Method: Protein A purification
Size: 100tests , 5 ul/test	GeneID (NCBI): 3920	CloneNo.: H4B4
Source: Mouse	ENSEMBL Gene ID: ENSG00000005893	Excitation/Emission maxima wavelengths: 399 nm / 422 nm
Isotype: IgG2a	Full Name: lysosomal-associated membrane protein 2	
	Calculated MW: 45 kDa	

Applications

Tested Applications:
FC (Intra)

Species Specificity:
human

Background Information

LAMP2 (CD107b) is a Lysosomal membrane glycoprotein. LAMP2 is extensively glycosylated with asparagine-linked oligosaccharides which protect it from intracellular proteolysis (PMID: 10521503). Although LAMP-2 is localized primarily in the endosome-lysosomal membrane of cells, it is also found on the plasma membrane under certain circumstances, e.g., after platelet activation, during granulocytic differentiation and activation, and in some tumor cells (PMID: 12221139). LAMP is involved in lysosomal stability and autophagy (PMID: 12221139). This glycoprotein provides selectins with carbohydrate ligands. LAMP2 may play a role in tumor cell metastasis (PMID 9426697).

Storage

Storage:
Store at 2-8°C. Avoid exposure to light. Stable for one year after shipment.

Storage Buffer:
PBS with 0.09% sodium azide.

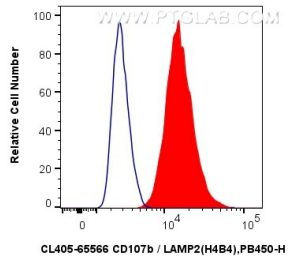
For technical support and original validation data for this product please contact:

T: 1 (888) 4PTGLAB (1-888-478-4522) (toll free in USA), or 1(312) 455-8498 (outside USA)

E: proteintech@ptglab.com
W: ptglab.com

This product is exclusively available under Proteintech Group brand and is not available to purchase from any other manufacturer.

Selected Validation Data



1x10⁶ Jurkat cells were intracellularly stained with 5ul CoraLite® Plus 405 Anti-Human CD107b / LAMP2 (H4B4) Mouse IgG2a RecAb (CL405-65566, Clone: H4B4) (red) or CoraLite® Plus 405 Mouse IgG2a Isotype Control (C1.18.4) (CL405-65208, Clone: C1.18.4) (blue). Cells were fixed with 4% PFA and permeabilized with Flow Cytometry Perm Buffer (PF00011-C).