

For Research Use Only

CoraLite® Plus 405 Anti-Human CD56 (B-A19)



Catalog Number: **CL405-65264**

Basic Information

Catalog Number: CL405-65264	GenBank Accession Number: BC014205	Purification Method: Affinity purification
Size: 100tests , 5 µl/test	GeneID (NCBI): 4684	CloneNo.: B-A19
Source: Mouse	Full Name: neural cell adhesion molecule 1	Excitation/Emission maxima wavelengths: 399 nm / 422 nm
Isotype: IgG1		

Applications

Tested Applications:
FC

Species Specificity:
Human

Background Information

Neural cell adhesion molecule 1 (NCAM1, also known as CD56) is a cell adhesion glycoprotein of the immunoglobulin (Ig) superfamily. It is a multifunction protein involved in synaptic plasticity, neurodevelopment, and neurogenesis. NCAM1 is expressed on human neurons, glial cells, skeletal muscle cells, NK cells and a subset of T cells, and the expression is observed in a wide variety of human tumors, including myeloma, myeloid leukemia, neuroendocrine tumors, Wilms' tumor, neuroblastoma, and NK/T cell lymphomas.

Storage

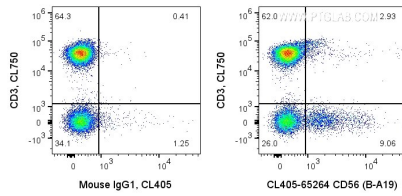
Storage:
Store at 2-8°C. Avoid exposure to light. Stable for one year after shipment.

Storage Buffer:
PBS with 0.09% sodium azide and 0.5% BSA.

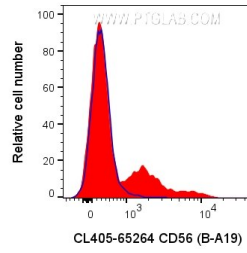
For technical support and original validation data for this product please contact:
T: 1 (888) 4PTGLAB (1-888-478-4522) (toll free in USA), or 1(312) 455-8498 (outside USA) E: proteintech@ptglab.com
W: ptglab.com

This product is exclusively available under Proteintech Group brand and is not available to purchase from any other manufacturer.

Selected Validation Data



1X10⁶ human PBMCs were surface co-stained with CL750 Anti-Human CD3 and 5 ul CoraLite® Plus 405 Anti-Human CD56 (CL405-65264, Clone:B-A19), or Mouse IgG1 Isotype Control. Cells were not fixed. Lymphocytes were gated.



1X10⁶ human PBMCs were surface stained with 5 ul CoraLite® Plus 405 Anti-Human CD56 (CL405-65264, Clone:B-A19), or Mouse IgG1 Isotype Control. Cells were not fixed. CD3-negative lymphocytes were gated.