

For Research Use Only

# CoraLite® Plus 405 Anti-Human CD155/PVR (SKII.4)

Catalog Number: CL405-65251



## Basic Information

Catalog Number: CL405-65251	GenBank Accession Number: BC015542	Purification Method: N/A
Size: 100tests , 5 ul/test	GeneID (NCBI): 5817	CloneNo.: SKII.4
Source: Mouse	UNIPROT ID: P15151	Recommended Dilutions: FC: 5 ul per 10 <sup>6</sup> cells in 100 µl suspension
Isotype: IgG1, kappa	Full Name: poliovirus receptor	Excitation/Emission maxima wavelengths: 399 nm / 422 nm
	Calculated MW: 45 kDa	

## Applications

Tested Applications: FC	Positive Controls: FC : U-937 cells,
Species Specificity: human	

## Background Information

CD155, also known as PVR, is a type I transmembrane glycoprotein in the immunoglobulin superfamily. It contains three extracellular immunoglobulin-like domains, D1-D3, of which D1 is recognized by the virus. Mature human CD155 consists of a 323 amino acid extracellular domain with one N-terminal V-type and two C2-type Ig-like domains, a 24 amino acid transmembrane segment, and a 50 amino acid cytoplasmic tail. CD155 is thought to play a role in adhesion by interaction with the ECM component vitronectin as well as a role in NK killing of tumor cells. CD155 binds to two receptors of NK cells, CD96 and CD226, and accumulates at cell-cell contact sites, leading to the formation of mature immune synapses between NK cells and target cells. CD155 serves as the entry receptor for poliovirus and thereby mediates human susceptibility to poliovirus infection.

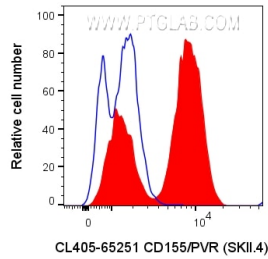
## Storage

**Storage:**  
Store at 2-8°C. Avoid exposure to light. Stable for one year after shipment.  
**Storage Buffer:**  
PBS with 0.09% sodium azide and 0.5% BSA, pH7.3

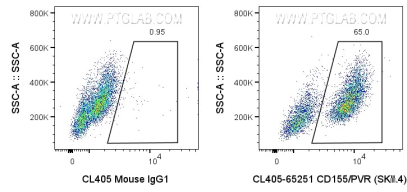
For technical support and original validation data for this product please contact:  
T: 1 (888) 4PTGLAB (1-888-478-4522) (toll free in USA), or 1(312) 455-8498 (outside USA)  
E: [proteintech@ptglab.com](mailto:proteintech@ptglab.com)  
W: [ptglab.com](http://ptglab.com)

This product is exclusively available under Proteintech Group brand and is not available to purchase from any other manufacturer.

## Selected Validation Data



U-937 cells (positive) and Jurkat cells (negative) were mixed 1:1 and  $1 \times 10^6$  cells were surface stained with 5  $\mu$ l CoraLite® Plus 405 Anti-Human CD155/PVR (CL405-65251, Clone: SKII.4) (red) or CoraLite® Plus 405 Mouse IgG1 Isotype Control (CL405-65124, Clone: MOPC-21) (blue). Cells were not fixed.



U-937 cells (positive) and Jurkat cells (negative) were mixed 1:1 and  $1 \times 10^6$  cells were surface stained with 5  $\mu$ l CoraLite® Plus 405 Anti-Human CD155/PVR (CL405-65251, Clone: SKII.4) or CoraLite® Plus 405 Mouse IgG1 Isotype Control (CL405-65124, Clone: MOPC-21). Cells were not fixed.