

For Research Use Only

# Biotin Anti-Human CD138/Syndecan-1 Rabbit Recombinant Antibody

Catalog Number: Biotin-98051



## Basic Information

Catalog Number:

Biotin-98051

Size:

100ug, 500 ug/ml

Source:

Rabbit

Isotype:

IgG

Immunogen Catalog Number:

EG0132

GenBank Accession Number:

BC008765

GeneID (NCBI):

6382

UNIPROT ID:

P18827

Full Name:

syndecan 1

Calculated MW:

32.5 kDa

Purification Method:

Protein A purification

CloneNo.:

240422C4

Recommended Dilutions:

FC: 5 ul per 10<sup>6</sup> cells in a 100 µl suspension

## Applications

Tested Applications:

FC

Species Specificity:

human

Positive Controls:

FC : U266 cells,

## Background Information

CD138, also named as Syndecan-1 (SDC1), is an integral membrane protein. It participates in cell proliferation, cell migration and cell-matrix interactions via its receptor for extracellular matrix proteins. It is a heparan sulfate proteoglycan expressed on the surface of, and actively shed by, myeloma cells. Altered syndecan-1 expression has been detected in several different tumor types. CD138 was regarded as a useful marker for labeling normal and neoplastic plasma cells and plasmacytoid lymphomas.

## Storage

Storage:

Store at 2-8°C. Avoid exposure to light. Stable for one year after shipment.

Storage Buffer:

PBS with 0.09% sodium azide and 0.5% BSA, pH7.3

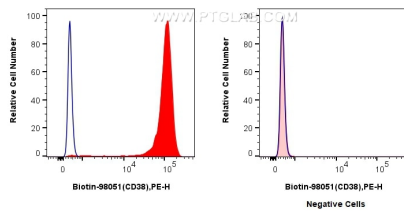
For technical support and original validation data for this product please contact:

T: 1 (888) 4PTGLAB (1-888-478-4522) (toll free in USA), or 1(312) 455-8498 (outside USA)

E: [proteintech@ptglab.com](mailto:proteintech@ptglab.com)  
W: [ptglab.com](http://ptglab.com)

This product is exclusively available under Proteintech Group brand and is not available to purchase from any other manufacturer.

## Selected Validation Data



$1 \times 10^6$  U266 cells (left) or Jurkat cells (right) were surface stained with 5  $\mu$ l Biotin Anti-Human CD138/Syndecan-1 Rabbit RecAb (Biotin-98051, Clone: 240422C4) and PE-conjugated streptavidin (red), or unstained (blue). Cells were not fixed.