

For Research Use Only

Biotin Plus-conjugated GPM6A Polyclonal antibody

Catalog Number: Biotin-15044



Basic Information

Catalog Number: Biotin-15044	GenBank Accession Number: BC022528	Purification Method: Antigen affinity purification
Size: 100ul , Concentration: 1000 ug/ml by Nanodrop;	GeneID (NCBI): 2823	Recommended Dilutions: IHC 1:50-1:500
Source: Rabbit	UNIPROT ID: P51674	
Isotype: IgG	Full Name: glycoprotein M6A	
Immunogen Catalog Number: AG6915	Calculated MW: 31 kDa	
	Observed MW: 31 kDa	

Applications

Tested Applications:
IHC

Species Specificity:
human, mouse, rat

**Note-IHC: suggested antigen retrieval with
TE buffer pH 9.0; (*) Alternatively, antigen
retrieval may be performed with citrate
buffer pH 6.0**

Positive Controls:

IHC : mouse brain tissue,

Background Information

Glycoprotein M6A (GPM6A, or M6A) is known as a multi-pass transmembrane protein and an abundant cell surface protein on neurons in the central nervous system (CNS). M6A belongs to the myelin proteolipid protein family and is involved in neuronal differentiation, including differentiation and migration of neuronal stem cell. M6A is identified as a retinal membrane protein that is strongly expressed at embryonic stages. In mouse adult retina, M6A plays a role in neuronal plasticity and is involved in neurite and filopodia outgrowth, filopodia motility and probably synapse formation via regulation of MAPK and Src signaling pathways.

Storage

Storage:

Store at -20°C. Avoid exposure to light. Stable for one year after shipment.

Storage Buffer:

PBS with 50% Glycerol, 0.05% Proclin300, 0.5% BSA, pH 7.3.

Aliquoting is unnecessary for -20°C storage

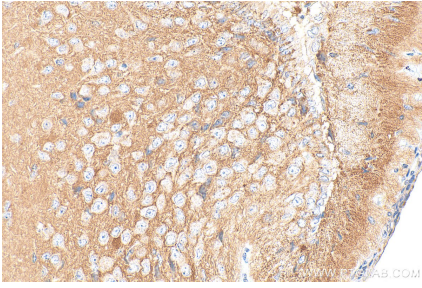
For technical support and original validation data for this product please contact:

T: 1 (888) 4PTGLAB (1-888-478-4522) (toll free
in USA), or 1(312) 455-8498 (outside USA)

E: proteintech@ptglab.com
W: ptglab.com

**This product is exclusively available under Proteintech
Group brand and is not available to purchase from any
other manufacturer.**

Selected Validation Data



Immunohistochemical analysis of paraffin-embedded mouse brain tissue slide using Biotin-15044 (GPM6A antibody) at dilution of 1:200 (under 40x lens). Heat mediated antigen retrieval with Tris-EDTA buffer (pH 9.0).