

For Research Use Only

Biotin-conjugated L1CAM Monoclonal antibody

Catalog Number: Biotin-67115



Basic Information

Catalog Number: Biotin-67115	GenBank Accession Number: BC126229	Purification Method: Protein G purification
Size: 100ul , Concentration: 1000 ug/ml by Nanodrop;	GeneID (NCBI): 3897	CloneNo.: 3H7B9
Source: Mouse	UNIPROT ID: P32004	Recommended Dilutions: IHC 1:50-1:500
Isotype: IgG1	Full Name: L1 cell adhesion molecule	
Immunogen Catalog Number: AG17706	Calculated MW: 1257 aa, 140 kDa	
	Observed MW: 220 kDa	

Applications

Tested Applications: IHC	Positive Controls: IHC : mouse brain tissue, human hypothalamus tissue
Species Specificity: Human, Pig, Mouse, Rat	
Note-IHC: suggested antigen retrieval with TE buffer pH 9.0; (*) Alternatively, antigen retrieval may be performed with citrate buffer pH 6.0	

Background Information

L1CAM, also known as NCAM-L1 or CD171, is a cell adhesion molecule of the immunoglobulin superfamily. It is a 200-220 kDa transmembrane glycoprotein composed of six Ig-like domains and five fibronectin type III repeats followed by a transmembrane region and a highly conserved cytoplasmic tail (PMID: 3412448; 22796939). L1CAM is primarily expressed in the nervous system and is involved in neuron-neuron adhesion, neurite fasciculation, outgrowth of neurites, cerebellar granule cell migration, neurite outgrowth on Schwann cells and interactions among epithelial cells of intestinal crypts (PMID: 3412448; 10767310). L1CAM is overexpressed in many human cancers and is often associated with bad prognosis (PMID: 27267927; 26111503).

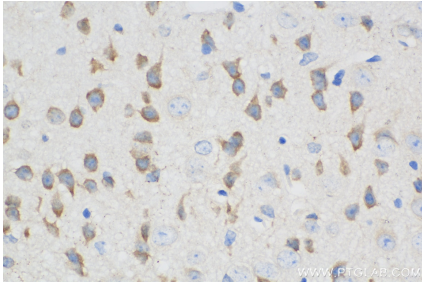
Storage

Storage:
Store at -20°C. Avoid exposure to light. Stable for one year after shipment.
Storage Buffer:
PBS with 50% Glycerol, 0.05% Proclin300, 0.5% BSA, pH 7.3.
Aliquoting is unnecessary for -20°C storage

For technical support and original validation data for this product please contact:
T: 1 (888) 4PTGLAB (1-888-478-4522) (toll free in USA), or 1(312) 455-8498 (outside USA) E: proteintech@ptglab.com
W: ptglab.com

This product is exclusively available under Proteintech Group brand and is not available to purchase from any other manufacturer.

Selected Validation Data



Immunohistochemical analysis of paraffin-embedded mouse brain tissue slide using Biotin-67115 (L1CAM antibody) at dilution of 1:50 (under 40x lens). Heat mediated antigen retrieval with Tris-EDTA buffer (pH 9.0).