

FOR IN VITRO RESEARCH USE ONLY.  
NOT FOR USE IN HUMANS OR ANIMALS.

# Recombinant human PPP2R5A protein



## Basic Information

**Catalog Number:**  
Ag31072

**Size:**  
50 µg

**Form:**  
Available lyophilized

**Species:**  
human

**Expression Source:**  
*e coli*-derived, PGEX-4T, with N-terminal GST.

**Biological Activity:**  
Not tested

**Endotoxin Level:**  
Please contact the lab for more information

**Peptide Sequence:**  
GSQAELHPLPQLKDATSNEQQELFCQKLQCCILFD  
FMDSVSDLKSKEIKRATLNLVEYVSTNIRGVIVESAYS  
DIVKMISA  
(48-129 aa encoded by BC022474)

## Reconstitution and Storage

**Reconstitution:**  
Reconstitute at 0.25 µg/µl in 200 µl sterile water for short-term storage.  
After reconstitution with sterile water, if glycerol has no effect on subsequent experiments, it is recommended to add an equal volume of glycerol for long-term storage (see Stability and Storage for more details).  
If a different concentration is needed for your purposes please adjust the reconstitution volume as required (please note: the ion concentration of the final solution will vary according to the volume used).  
Note: Centrifuge vial before opening. When reconstituting, gently pipet and wash down the sides of the vial to ensure full recovery of the protein into solution.

**Shipping:**  
The product is shipped at ambient temperature. Upon receipt, store it immediately at the recommended temperature (see below).

## Purity

90%, by SDS-PAGE with Coomassie Brilliant Blue staining.

## Formulation

The purified protein was Lyophilized from sterile PBS (58mM Na2HPO4, 17mM NaH2PO4, 68mM NaCl, pH8.). 5 % trehalose and 5 % mannitol are added as protectant before lyophilization. The elution buffer contain 100mM GSH.

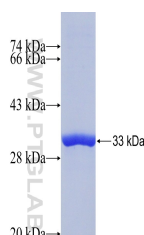
## Stability and Storage

Store for up to 12 months at -20°C to -80°C as lyophilized powder.

## Storage of Reconstituted Protein

**Short Term Storage:**  
Store at 2-8°C for (1-2 weeks).  
**Long Term Storage:**  
Aliquot and store at -20°C to -80°C for up to 3 months, reconstitution with sterile water and addition of an equal volume of glycerol. Avoid repeat freeze-thaw cycles.

## Selected Validation Data



For technical support and original validation data for this product please contact:  
T: 1 (888) 4PTGLAB (1-888-478-4522) E: proteintech@ptglab.com W: ptglab.com  
(toll free in USA), or 1(312) 455-8498 (outside USA)

This product is exclusively available under Proteintech Group brand and is not available to purchase from any other manufacturer.