

For Research Use Only

# Anti-Human CD16 Rabbit Recombinant Antibody, PBS Only

Catalog Number: 98387-1-PBS



## Basic Information

Catalog Number:

98387-1-PBS

Size:

1mg, 2 mg/ml

Source:

Rabbit

Isotype:

IgG

Immunogen Catalog Number:

EG31662

GenBank Accession Number:

BC017865

GeneID (NCBI):

2214

ENSEMBL Gene ID:

ENSG00000203747

UNIPROT ID:

P08637

Full Name:

Fc fragment of IgG, low affinity IIIa, receptor (CD16a)

Calculated MW:

254 aa, 29 kDa

Purification Method:

Protein A purification

CloneNo.:

242426C2

## Applications

Tested Applications:

FC

Species Specificity:

human

## Background Information

CD16 is a 50-70-kDa low affinity Fc receptor found on the surface of natural killer cells, neutrophil polymorphonuclear leukocytes, monocytes and macrophages. CD16 mediates antibody-dependent cellular cytotoxicity (ADCC) and other antibody-dependent responses, such as phagocytosis. CD16 has been identified as Fc receptors FcγRIIIa (CD16a) and FcγRIIIb (CD16b), encoded by two nearly identical genes, FCGR3A and the FCGR3B.

## Storage

Storage:

Store at -80°C.

Storage Buffer:

PBS only, pH7.3

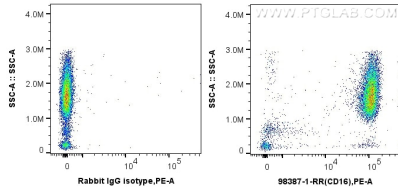
For technical support and original validation data for this product please contact:

T: 1 (888) 4PTGLAB (1-888-478-4522) (toll free in USA), or 1(312) 455-8498 (outside USA)

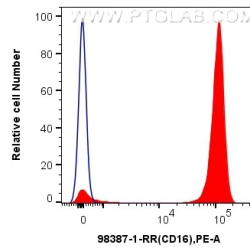
E: [proteintech@ptglab.com](mailto:proteintech@ptglab.com)  
W: [ptglab.com](http://ptglab.com)

This product is exclusively available under Proteintech Group brand and is not available to purchase from any other manufacturer.

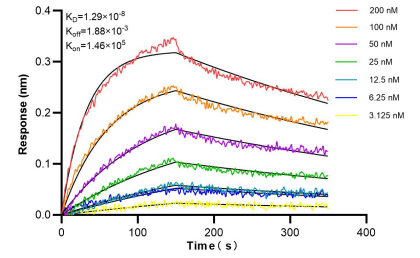
## Selected Validation Data



1x10<sup>6</sup> human peripheral blood leukocyte were surface stained with 0.25 ug Anti-Human CD16 Rabbit RecAb (98387-1-RR, Clone:242426C2) or Rabbit IgG Isotype Control RecAb (98136-1-RR, Clone: 240953C9) and PE-conjugated Goat Anti-Rabbit IgG. Cells were not fixed. This data was developed using the same antibody clone with 98387-1-PBS in a different storage buffer formulation.



1x10<sup>6</sup> human peripheral blood leukocyte were surface stained with 0.25 ug Anti-Human CD16 Rabbit RecAb (98387-1-RR, Clone:242426C2) (red) or Rabbit IgG Isotype Control RecAb (98136-1-RR, Clone: 240953C9) (blue) and PE-conjugated Goat Anti-Rabbit IgG. Cells were not fixed. This data was developed using the same antibody clone with 98387-1-PBS in a different storage buffer formulation.



Biolayer interferometry (BLI) kinetic assays of 98387-1-RR against Human CD16 were performed. The affinity constant is 12.9 nM.