

For Research Use Only

# Anti-Human ICAM-2/CD102 Rabbit Recombinant Antibody

Catalog Number: 98367-1-RR



## Basic Information

<b>Catalog Number:</b> 98367-1-RR	<b>GenBank Accession Number:</b> NM_001099789.2	<b>Purification Method:</b> Protein A purification
<b>Size:</b> 100ug, 1000 µg/ml	<b>GeneID (NCBI):</b> 3384	<b>CloneNo.:</b> 242237F8
<b>Source:</b> Rabbit	<b>UNIPROT ID:</b> P13598	
<b>Isotype:</b> IgG	<b>Full Name:</b> intercellular adhesion molecule 2	
	<b>Calculated MW:</b> 31kDa	

## Applications

**Tested Applications:**  
FC

**Species Specificity:**  
human

## Background Information

ICAM2 is a cell adhesion protein having important roles in cell migration, especially during inflammation when leukocytes cross the endothelium. Initially described as a receptor for lymphocyte function-associated antigen-1 (LFA1), ICAM2 may play a role in lymphocyte recirculation by blocking LFA-1-dependent cell adhesion. It mediates adhesive interactions important for antigen-specific immune response, NK-cell mediated clearance, lymphocyte recirculation, and other cellular interactions important for immune response and surveillance.

## Storage

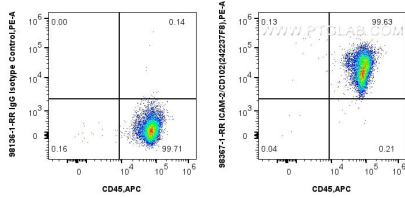
**Storage:**  
Store at 2 - 8°C. Stable for one year after shipment.

**Storage Buffer:**  
PBS with 0.09% sodium azide, pH 7.3.

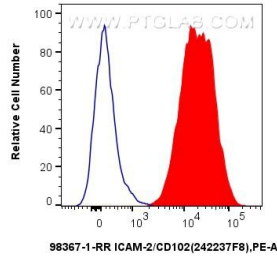
For technical support and original validation data for this product please contact:  
T: 1 (888) 4PTGLAB (1-888-478-4522) (toll free in USA), or 1(312) 455-8498 (outside USA)      E: proteintech@ptglab.com  
W: ptglab.com

This product is exclusively available under Proteintech Group brand and is not available to purchase from any other manufacturer.

## Selected Validation Data



1x10<sup>6</sup> human PBMCs were surface stained with 0.25 ug Anti-Human ICAM-2/CD102 Rabbit RecAb (98367-1-RR, Clone:242237F8) or 0.25 ug Rabbit IgG Isotype Control RecAb (98136-1-RR, Clone: 240953C9) and PE-Conjugated Goat Anti-Rabbit IgG(H+L). Cells were then stained with APC Anti-Human CD45. Cells were incubated with FC Receptor Block prior to staining. Cells were not fixed.



1x10<sup>6</sup> human PBMCs were surface stained with 0.25 ug Anti-Human ICAM-2/CD102 Rabbit RecAb (98367-1-RR, Clone:242237F8) (red) or 0.25 ug Rabbit IgG Isotype Control RecAb (98136-1-RR, Clone: 240953C9) (blue) and PE-Conjugated Goat Anti-Rabbit IgG(H+L). Cells were incubated with FC Receptor Block prior to staining. Cells were not fixed.