

For Research Use Only

Anti-Human ICAM-2/CD102 Rabbit Recombinant Antibody, PBS Only

Catalog Number: 98367-1-PBS



Basic Information

Catalog Number:

98367-1-PBS

Size:

1mg, 2 mg/ml

Source:

Rabbit

Isotype:

IgG

GenBank Accession Number:

NM_001099789.2

GeneID (NCBI):

3384

UNIPROT ID:

P13598

Full Name:

intercellular adhesion molecule 2

Calculated MW:

31kDa

Purification Method:

Protein A purification

CloneNo.:

242237F8

Applications

Tested Applications:

FC

Species Specificity:

human

Background Information

ICAM2 is a cell adhesion protein having important roles in cell migration, especially during inflammation when leukocytes cross the endothelium. Initially described as a receptor for lymphocyte function-associated antigen-1 (LFA1), ICAM2 may play a role in lymphocyte recirculation by blocking LFA-1-dependent cell adhesion. It mediates adhesive interactions important for antigen-specific immune response, NK-cell mediated clearance, lymphocyte recirculation, and other cellular interactions important for immune response and surveillance.

Storage

Storage:

Store at -80°C.

Storage Buffer:

PBS Only

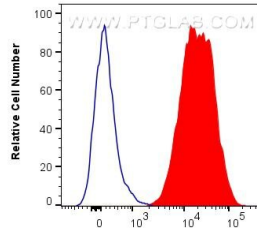
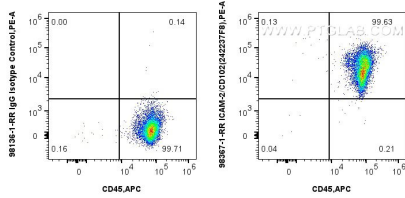
For technical support and original validation data for this product please contact:

T: 1 (888) 4PTGLAB (1-888-478-4522) (toll free in USA), or 1(312) 455-8498 (outside USA)

E: proteintech@ptglab.com
W: ptglab.com

This product is exclusively available under Proteintech Group brand and is not available to purchase from any other manufacturer.

Selected Validation Data



1x10⁶ human PBMCs were surface stained with 0.25 ug Anti-Human ICAM-2/CD102 Rabbit RecAb (98367-1-RR, Clone:242237F8) or 0.25 ug Rabbit IgG Isotype Control RecAb (98136-1-RR, Clone: 240953C9) and PE-Conjugated Goat Anti-Rabbit IgG(H+L). Cells were then stained with APC Anti-Human CD45. Cells were incubated with FC Receptor Block prior to staining. Cells were not fixed. This data was developed using the same antibody clone with 98367-1-PBS in a



1x10⁶ human PBMCs were surface stained with 0.25 ug Anti-Human ICAM-2/CD102 Rabbit RecAb (98367-1-RR, Clone:242237F8) (red) or 0.25 ug Rabbit IgG Isotype Control RecAb (98136-1-RR, Clone: 240953C9) (blue) and PE-Conjugated Goat Anti-Rabbit IgG(H+L). Cells were incubated with FC Receptor Block prior to staining. Cells were not fixed. This data was developed using the same antibody clone with 98367-1-PBS in a

