

For Research Use Only

Anti-Human SEMA7A Rabbit Recombinant Antibody

Catalog Number: 98324-3-RR



Basic Information

Catalog Number:

98324-3-RR

Size:

100ug , 1000 µg/ml

Source:

Rabbit

Isotype:

IgG

Immunogen Catalog Number:

EG2005

GenBank Accession Number:

NM_003612.5

GeneID (NCBI):

8482

UNIPROT ID:

O75326-1

Full Name:

semaphorin 7A, GPI membrane anchor (John Milton Hagen blood group)

Calculated MW:

75kDa

Purification Method:

Protein A purification

CloneNo.:

241814B12

Recommended Dilutions:

FC: 0.25 ug per 10⁶ cells in a 100 µl suspension

Applications

Tested Applications:

FC

Species Specificity:

human

Positive Controls:

FC : PHA treated human PBMCs,

Background Information

SEMA7A, also named CD108 and SEMAL, belongs to the semaphorin family. SEMA7A is the only membrane-associated glycosylphosphatidylinositol (GPI)-linked semaphorin and plays a role in the regulation of neuronal axon outgrowth. In addition to its role in guiding axon pathfinding during neuronal development, SEMA7A has diverse functions in morphogenesis and immune cell control and regulates T cell responses via the α1β1 integrin receptor.

Storage

Storage:

Store at 2 - 8°C. Stable for one year after shipment.

Storage Buffer:

PBS with 0.09% sodium azide, pH7.3

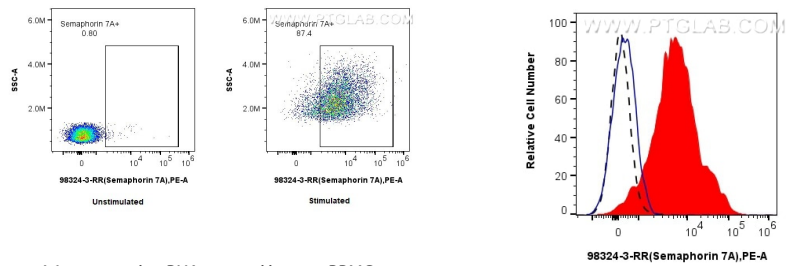
For technical support and original validation data for this product please contact:

T: 1 (888) 4PTGLAB (1-888-478-4522) (toll free in USA), or 1(312) 455-8498 (outside USA)

E: proteintech@ptglab.com
W: ptglab.com

This product is exclusively available under Proteintech Group brand and is not available to purchase from any other manufacturer.

Selected Validation Data



1x10⁶ untreated or PHA-treated human PBMCs were surface stained with 0.25 ug Anti-Human SEMA7A Rabbit RecAb (98324-3-RR, Clone: 241814B12) or 0.25 ug Rabbit IgG Isotype Control RecAb (98136-1-RR, Clone: 240953C9), and PE-Conjugated Goat Anti-Rabbit IgG(H+L). Cells were not fixed.

1x10⁶ PHA-treated human PBMCs were surface stained with 0.25 ug Anti-Human SEMA7A Rabbit RecAb (98324-3-RR, Clone: 241814B12) (red) or 0.25 ug Rabbit IgG Isotype Control RecAb (98136-1-RR, Clone: 240953C9) (blue), and PE-Conjugated Goat Anti-Rabbit IgG(H+L). 1x10⁶ untreated human PBMCs were surface stained with 0.25 ug Anti-Human SEMA7A Rabbit RecAb (98324-3-RR, Clone: 241814B12) and PE-Conjugated Goat Anti-Rabbit IgG(H+L)

