

For Research Use Only

# Anti-Human SEMA7A Rabbit Recombinant Antibody, PBS Only

Catalog Number: 98324-3-PBS



## Basic Information

**Catalog Number:**

98324-3-PBS

**Size:**

1mg, 2 mg/ml

**Source:**

Rabbit

**Isotype:**

IgG

**Immunogen Catalog Number:**

EG2005

**GenBank Accession Number:**

NM\_003612.5

**GeneID (NCBI):**

8482

**UNIPROT ID:**

O75326-1

**Full Name:**

semaphorin 7A, GPI membrane anchor (John Milton Hagen blood group)

**Calculated MW:**

75kDa

**Purification Method:**

Protein A purification

**CloneNo.:**

241814B12

## Applications

**Tested Applications:**

FC

**Species Specificity:**

human

## Background Information

SEMA7A, also named CD108 and SEMAL, belongs to the semaphorin family. SEMA7A is the only membrane-associated glycosylphosphatidylinositol (GPI)-linked semaphorin and plays a role in the regulation of neuronal axon outgrowth. In addition to its role in guiding axon pathfinding during neuronal development, SEMA7A has diverse functions in morphogenesis and immune cell control and regulates T cell responses via the  $\alpha 1\beta 1$  integrin receptor.

## Storage

**Storage:**

Store at -80°C.

**Storage Buffer:**

PBS only, pH7.3

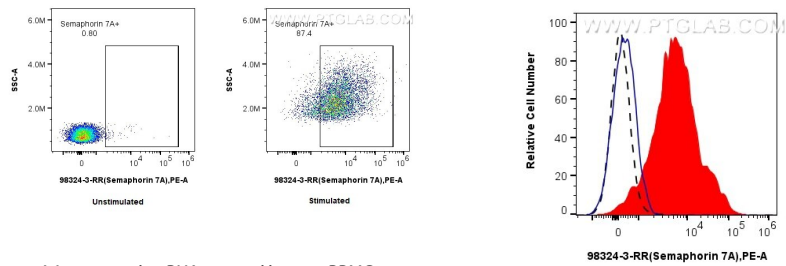
For technical support and original validation data for this product please contact:

T: 1 (888) 4PTGLAB (1-888-478-4522) (toll free in USA), or 1(312) 455-8498 (outside USA)

E: [proteintech@ptglab.com](mailto:proteintech@ptglab.com)  
W: [ptglab.com](http://ptglab.com)

This product is exclusively available under Proteintech Group brand and is not available to purchase from any other manufacturer.

Selected Validation Data



1x10<sup>6</sup> untreated or PHA-treated human PBMCs were surface stained with 0.25 ug Anti-Human SEMA7A Rabbit RecAb (98324-3-RR, Clone: 241814B12) or 0.25 ug Rabbit IgG Isotype Control RecAb (98136-1-RR, Clone: 240953C9), and PE-Conjugated Goat Anti-Rabbit IgG(H+L). Cells were not fixed. This data was developed using the same antibody clone with 98324-3-PBS in a different storage buffer formulation.

1x10<sup>6</sup> PHA-treated human PBMCs were surface stained with 0.25 ug Anti-Human SEMA7A Rabbit RecAb (98324-3-RR, Clone: 241814B12) (red) or 0.25 ug Rabbit IgG Isotype Control RecAb (98136-1-RR, Clone: 240953C9) (blue), and PE-Conjugated Goat Anti-Rabbit IgG(H+L). 1x10<sup>6</sup> untreated human PBMCs were surface stained with 0.25 ug Anti-Human SEMA7A Rabbit RecAb (98324-3-RR, Clone: 241814B12) and PE-Conjugated Goat Anti-Rabbit IgG(H+L)

