

For Research Use Only

Anti-Human IL-10RB Rabbit Recombinant Antibody

Catalog Number: 98292-1-RR



Basic Information

Catalog Number: 98292-1-RR	GenBank Accession Number: BC001903	Purification Method: Protein A purification
Size: 100ug , 1000 µg/ml	GeneID (NCBI): 3588	CloneNo.: 242302D2
Source: Rabbit	UNIPROT ID: Q08334	
Isotype: IgG	Full Name: interleukin 10 receptor, beta	
	Calculated MW: 37 kDa	

Applications

Tested Applications:
FC

Species Specificity:
human

Background Information

Interleukin-10 (IL-10) is an anti-inflammatory cytokine that plays a critical role in maintaining immune system balance. IL-10 signals through a receptor complex consisting of two molecules of the IL-10R alpha-chain (IL-10RA) and two molecules of the accessory IL-10R beta-chain (IL-10RB) (PMID: 22236434). IL-10RA and IL-10RB are members of the type II cytokine receptor family. IL-10RB, also known as IL-10R2 or CDw210b, is the signaling subunit of the IL-10R complex and is constitutively expressed in a variety of cell types (PMID: 24507158). Binding of IL-10 to the IL-10R complex leads to JAK1- and TYK2-mediated phosphorylation of STAT3 (PMID: 11244051; 10433356). IL-10RB is also shared by several other cytokines, including IL22, IL-26, IFN-γ, IL-28A/B and IL29 (PMID: 22236434).

Storage

Storage:
Store at 2 - 8°C. Stable for one year after shipment.

Storage Buffer:
PBS with 0.09% sodium azide, pH 7.3.

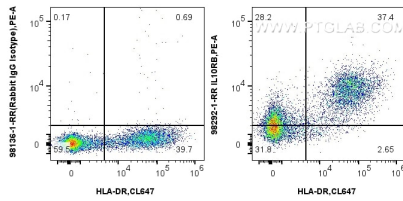
For technical support and original validation data for this product please contact:

T: 1 (888) 4PTGLAB (1-888-478-4522) (toll free in USA), or 1(312) 455-8498 (outside USA)

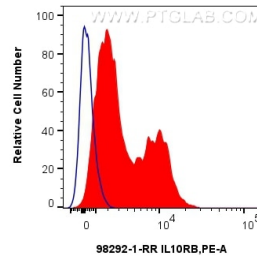
E: proteintech@ptglab.com
W: ptglab.com

This product is exclusively available under Proteintech Group brand and is not available to purchase from any other manufacturer.

Selected Validation Data



1x10⁶ human PBMCs were surface stained with 0.25 ug Anti-Human IL-10RB Rabbit RecAb (98292-1-RR, Clone: 242302D2) or Rabbit IgG Isotype Control RecAb (98136-1-RR, Clone: 240953C9), and PE-Conjugated Goat Anti-Rabbit IgG(H+L). Cells were co-stained with CoraLite® Plus 647 Anti-Human HLA-DR (L243) Mouse IgG2a Recombinant Antibody (CL647-65560, Clone: L243). Cells were not fixed.



1x10⁶ human PBMCs were surface stained with 0.25 ug Anti-Human IL-10RB Rabbit RecAb (98292-1-RR, Clone:242302D2) (red) or Rabbit IgG Isotype Control RecAb (98136-1-RR, Clone: 240953C9) (blue), and PE-Conjugated Goat Anti-Rabbit IgG(H+L). Cells were not fixed.