

For Research Use Only

# Anti-Human GPR56 Rabbit Recombinant Antibody, PBS Only

Catalog Number: 98291-1-PBS



## Basic Information

Catalog Number:

98291-1-PBS

Size:

1mg, 2 mg/ml

Source:

Rabbit

Isotype:

IgG

GenBank Accession Number:

NM\_001145771.2

GeneID (NCBI):

9289

UNIPROT ID:

Q9Y653

Full Name:

G protein-coupled receptor 56

Calculated MW:

78 kDa

Purification Method:

Protein A purification

CloneNo.:

242249A7

## Applications

Tested Applications:

FC

Species Specificity:

human

## Background Information

GPR56 (G-protein-coupled receptor 56, also named ADGRG1) is a member of the adhesion G-protein coupled receptor (aGPCR) family and one of the important players in the normal development of the brain. It plays a pivotal role in diverse neurobiological processes, including cortical formation, oligodendrocyte development, and myelination (PMID: 32798453). Moreover, GPR56 has been reported to regulate VEGF secretion and angiogenesis in melanoma (PMID: 37579299).

## Storage

Storage:

Store at -80°C.

Storage Buffer:

PBS Only

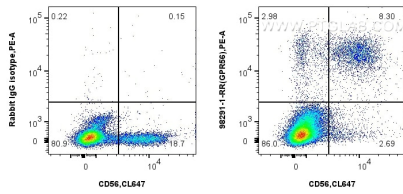
For technical support and original validation data for this product please contact:

T: 1 (888) 4PTGLAB (1-888-478-4522) (toll free in USA), or 1(312) 455-8498 (outside USA)

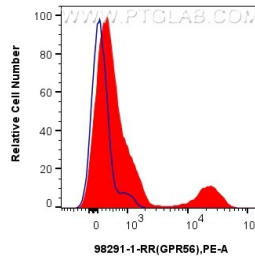
E: [proteintech@ptglab.com](mailto:proteintech@ptglab.com)  
W: [ptglab.com](http://ptglab.com)

This product is exclusively available under Proteintech Group brand and is not available to purchase from any other manufacturer.

## Selected Validation Data



1x10<sup>6</sup> human peripheral blood leukocytes were surface stained with 0.25 ug Anti-Human GPR56 Rabbit RecAb (98291-1-RR, Clone: 242249A7) or 0.25 ug Rabbit IgG Isotype Control RecAb (98136-1-RR, Clone: 240953C9), and PE-Conjugated Goat Anti-Rabbit IgG(H+L). Cells were co-stained with CoraLite® Plus 647 Anti-Human NCAM1/CD56 Rabbit Recombinant Antibody (CL647-98033, Clone: 240078A7). Cells were incubated with FC Receptor Block prior to



1x10<sup>6</sup> human peripheral blood leukocytes were surface stained with 0.25 ug Anti-Human GPR56 Rabbit RecAb (98291-1-RR, Clone: 242249A7)(red) or 0.25 ug Rabbit IgG Isotype Control RecAb (98136-1-RR, Clone: 240953C9) (blue), and PE-Conjugated Goat Anti-Rabbit IgG(H+L). Cells were incubated with FC Receptor Block prior to staining. Cells were not fixed. This data was developed using the same antibody clone with 98291-1-PBS in a different storage

