

For Research Use Only

Anti-Human IL-12/IL-23 p40 Rabbit Recombinant Antibody, PBS Only

Catalog Number: 98277-1-PBS



Basic Information

Catalog Number:

98277-1-PBS

Size:

1mg , 2 mg/ml

Source:

Rabbit

Isotype:

IgG

GenBank Accession Number:

BC067498

GeneID (NCBI):

3593

UNIPROT ID:

P29460

Full Name:

interleukin 12B (natural killer cell stimulatory factor 2, cytotoxic lymphocyte maturation factor 2, p40)

Calculated MW:

328 aa, 37 kDa

Purification Method:

Protein A purification

CloneNo.:

241600F8

Applications

Tested Applications:

FC (Intra)

Species Specificity:

human

Background Information

Interleukin (IL)-12 and IL-23 are heterodimeric cytokines that share a common p40 subunit (PMID: 11114383). IL-12 is composed of the IL-12 p40 subunit linked to the IL-12 p35 subunit, and the heterodimer signals through the IL-12 receptor (IL-12R), which comprises the IL-12R β 1 and IL-12R β 2 subunits. IL-23 is composed of the IL-23 p19 subunit and the IL-12 p40 (IL-12/23p40) subunit, which signals through IL-23R and IL-12R β 1 (PMID: 11114383; 26121196). IL-12/IL-23 p40 also exists as a monomer and as a homodimer which can act as a potent IL-12 antagonist (PMID: 8958912; 18783467). IL-12/IL-23 p40 is produced by antigen-presenting cells, such as dendritic cells (DCs), monocytes, macrophages, neutrophils and, to a lesser extent, B cells (PMID: 20476918).

Storage

Storage:

Store at -80°C.

Storage Buffer:

PBS Only

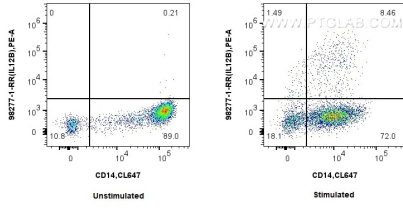
For technical support and original validation data for this product please contact:

T: 1 (888) 4PTGLAB (1-888-478-4522) (toll free in USA), or 1(312) 455-8498 (outside USA)

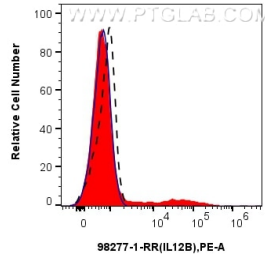
E: proteintech@ptglab.com
W: ptglab.com

This product is exclusively available under Proteintech Group brand and is not available to purchase from any other manufacturer.

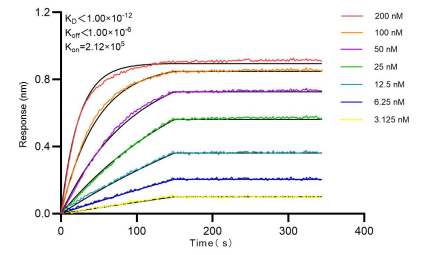
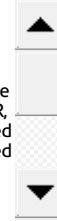
Selected Validation Data



1x10⁶ untreated or IFN gamma, LPS and Brefeldin A treated human PBMCs were intracellularly stained with 0.25 ug Anti-Human IL-12/IL-23 p40 Rabbit Recombinant Antibody (98277-1-RR, Clone: 241600F8) and PE-Conjugated Goat Anti-Rabbit IgG(H+L). Cells were co-stained with CoraLite® Plus 647 Anti-Human CD14 Rabbit Recombinant Antibody (CL647-98040, Clone: 230332D7). Cells were fixed with 4% PFA and permeabilized with Flow Cytometry Perm



1x10⁶ IFN gamma, LPS and Brefeldin A treated human PBMCs were intracellularly stained with 0.25 ug Anti-Human IL12B Rabbit Recombinant Antibody (98277-1-RR, Clone: 241600F8) (red) or Rabbit IgG Isotype Control Recombinant Antibody (98136-1-RR, Clone: 240953C9) (blue), and PE-Conjugated Goat Anti-Rabbit IgG(H+L). 1x10⁶ untreated human PBMCs were stained with 0.25 ug Anti-Human IL-12/IL-23 p40 Rabbit Recombinant Antibody (98277-1-RR, Clone:



Bi-layer interferometry (BLI) kinetic assays of 98277-1-RR against Human IL-12/IL-23 p40 were performed. The affinity constant is below 1 pM.