

For Research Use Only

# Anti-Mouse CXCL2 Rabbit Recombinant Antibody, PBS Only

Catalog Number: 98259-1-PBS



## Basic Information

<b>Catalog Number:</b> 98259-1-PBS	<b>GenBank Accession Number:</b> NM_009140	<b>Purification Method:</b> Protein A purification
<b>Size:</b> 1mg, 2 mg/ml	<b>GeneID (NCBI):</b> 20310	<b>CloneNo.:</b> 242007G5
<b>Source:</b> Rabbit	<b>UNIPROT ID:</b> P10889	
<b>Isotype:</b> IgG	<b>Full Name:</b> chemokine (C-X-C motif) ligand 2	
	<b>Calculated MW:</b> 11 kDa	

## Applications

**Tested Applications:**  
FC (Intra)

**Species Specificity:**  
mouse

## Background Information

CXCL2 is a member of the CXC subfamily, which encodes secreted proteins involved in immunoregulatory and inflammatory processes. CXCL2 is expressed at sites of inflammation and may suppress hematopoietic progenitor cell proliferation. CXCL2 plays a critical role in maintaining cancer-induced macrophage infiltration and the resulting mechanical hypersensitivity and persistent spontaneous nociception (PMID: 36754246).

## Storage

**Storage:**  
Store at -80°C.

**Storage Buffer:**  
PBS Only

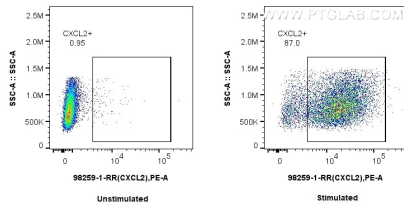
For technical support and original validation data for this product please contact:

T: 1 (888) 4PTGLAB (1-888-478-4522) (toll free in USA), or 1(312) 455-8498 (outside USA)

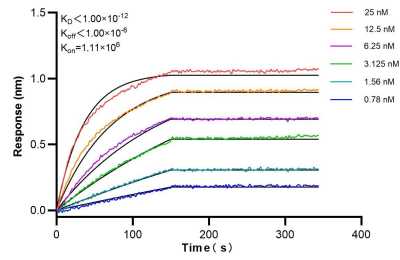
E: [proteintech@ptglab.com](mailto:proteintech@ptglab.com)  
W: [ptglab.com](http://ptglab.com)

**This product is exclusively available under Proteintech Group brand and is not available to purchase from any other manufacturer.**

## Selected Validation Data



1x10<sup>6</sup> untreated or LPS and Brefeldin A treated RAW 264.7 cells were intracellularly stained with 0.25 ug Anti-Mouse CXCL2 Rabbit Recombinant Antibody (98259-1-RR, Clone: 242007G5) and PE-Conjugated Goat Anti-Rabbit IgG(H+L). Cells were fixed with 4% PFA and permeabilized with Flow Cytometry Perm Buffer (PF00011-C). This data was developed using the same antibody clone with 98259-1-PBS in a different storage buffer formulation.



Biolayer interferometry (BLI) kinetic assays of 98259-1-RR against Mouse CXCL2 were performed. The affinity constant is below 1 pM.