

For Research Use Only

Anti-Mouse CD31 Rabbit Recombinant Antibody, PBS Only

Catalog Number: 98258-1-PBS



Basic Information

Catalog Number:

98258-1-PBS

Size:

1mg, 2 mg/ml

Source:

Rabbit

Isotype:

IgG

GenBank Accession Number:

NM_001305157.1

GeneID (NCBI):

18613

UNIPROT ID:

Q08481-1

Full Name:

platelet/endothelial cell adhesion molecule 1

Calculated MW:

81 kDa

Purification Method:

Protein A purification

CloneNo.:

242041B5

Applications

Tested Applications:

FC

Species Specificity:

mouse

Background Information

CD31, also known as PECAM1 (Platelet endothelial cell adhesion molecule), is a member of the immunoglobulin gene superfamily of cell adhesion molecules. CD31 is a transmembrane glycoprotein that is highly expressed on the surface of the endothelium, making up a large portion of its intracellular junctions. It is also present on the surface of hematopoietic cells and immune cells including platelets, monocytes, neutrophils, natural killer cells, megakaryocytes and some types of T-cell (PMID: 9011572). As well as its role in cell-cell adhesion, CD31 functions as a signaling receptor, and is involved in important physiological events such as nitric oxide production, regulation of T-cell immunity and tolerance, leukocyte transendothelial migration and inflammation and angiogenesis (PMID: 21183735; 20978210; 17872453; 20634489).

Storage

Storage:

Store at -80°C.

Storage Buffer:

PBS Only

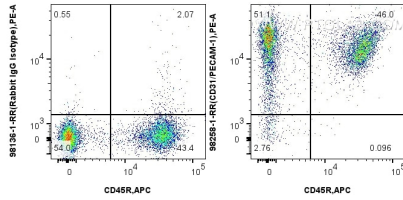
For technical support and original validation data for this product please contact:

T: 1 (888) 4PTGLAB (1-888-478-4522) (toll free in USA), or 1(312) 455-8498 (outside USA)

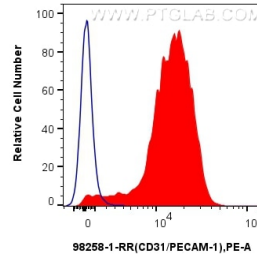
E: proteintech@ptglab.com
W: ptglab.com

This product is exclusively available under Proteintech Group brand and is not available to purchase from any other manufacturer.

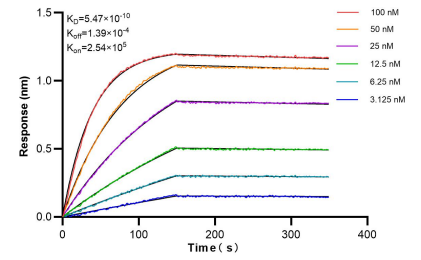
Selected Validation Data



1x10⁶ mouse splenocytes were surface stained with 0.15 ug Anti-Mouse CD31 Rabbit Recombinant Antibody (98258-1-RR, Clone: 242041B5) or Rabbit IgG Isotype Control Recombinant Antibody (98136-1-RR, Clone: 240953C9), and PE-Conjugated Goat Anti-Rabbit IgG(H+L). Cells were co-stained with APC Anti-Mouse CD45R (B220) (RA3-6B2) (APC-65139, Clone: RA3-6B2). Cells were not fixed. This data was developed using the same antibody clone with 98258-1-PBS in a



1x10⁶ mouse splenocytes were surface stained with 0.15 ug Anti-Mouse CD31 Rabbit Recombinant Antibody (98258-1-RR, Clone:242041B5) (red) or Rabbit IgG Isotype Control Recombinant Antibody (98136-1-RR, Clone: 240953C9), and PE-Conjugated Goat Anti-Rabbit IgG(H+L). Cells were not fixed. This data was developed using the same antibody clone with 98258-1-PBS in a different storage buffer formulation.



Biolayer interferometry (BLI) kinetic assays of 98258-1-RR against Mouse CD31 were performed. The affinity constant is 0.547 nM.