

For Research Use Only

Anti-Human CD49f/Integrin alpha 6 Rabbit Recombinant Antibody, PBS Only

Catalog Number: 98257-1-PBS



Basic Information

Catalog Number:

98257-1-PBS

Size:

1mg, 2 mg/ml

Source:

Rabbit

Isotype:

IgG

GenBank Accession Number:

BC136456

GeneID (NCBI):

3655

UNIPROT ID:

P23229

Full Name:

integrin, alpha 6

Calculated MW:

1073 aa, 119 kDa

Purification Method:

Protein A purification

CloneNo.:

241703B5

Applications

Tested Applications:

FC

Species Specificity:

human

Storage

Storage:

Store at -80°C.

Storage Buffer:

PBS Only

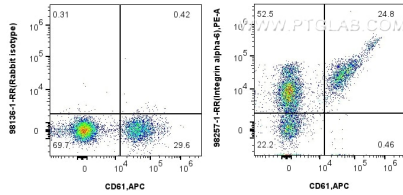
For technical support and original validation data for this product please contact:

T: 1 (888) 4PTGLAB (1-888-478-4522) (toll free
in USA), or 1(312) 455-8498 (outside USA)

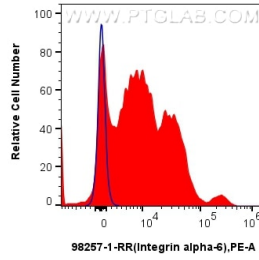
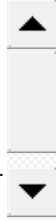
E: proteintech@ptglab.com
W: ptglab.com

This product is exclusively available under Proteintech Group brand and is not available to purchase from any other manufacturer.

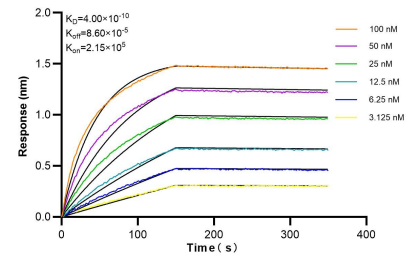
Selected Validation Data



1x10⁶ human peripheral blood lymphocytes were surface stained with 0.25 ug Anti-Human CD49f/Integrin alpha 6 Rabbit Recombinant Antibody (98257-1-RR, Clone: 241703B5) or Rabbit IgG Isotype Control Recombinant Antibody (98136-1-RR, Clone: 240953C9), and PE-conjugated Goat Anti-Rabbit IgG. Cells were co-stained with APC Anti-Human CD61. Cells were not fixed. This data was developed using the same antibody clone with 98257-1-PBS in a



1x10⁶ human peripheral blood lymphocytes were surface stained with 0.25 ug Anti-Human CD49f/Integrin alpha 6 Rabbit Recombinant Antibody (98257-1-RR, Clone: 241703B5) (red) or Rabbit IgG Isotype Control Recombinant Antibody (98136-1-RR, Clone: 240953C9) (blue), and PE-conjugated Goat Anti-Rabbit IgG. Cells were not fixed. This data was developed using the same antibody clone with 98257-1-PBS in a different storage buffer formulation.



Biolayer interferometry (BLI) kinetic assays of 98257-1-RR against Human CD49f/Integrin alpha 6 were performed. The affinity constant is 0.400 nM.