

For Research Use Only

# Anti-Rat KLRB1/CD161 Rabbit Recombinant Antibody, PBS Only

Catalog Number: 98249-1-PBS



## Basic Information

<b>Catalog Number:</b> 98249-1-PBS	<b>GenBank Accession Number:</b> NM_001010964.1	<b>Purification Method:</b> Protein A purification
<b>Size:</b> 1mg, 2 mg/ml	<b>GeneID (NCBI):</b> 362443	<b>CloneNo.:</b> 241840F3
<b>Source:</b> Rabbit	<b>UNIPROT ID:</b> P27471	
<b>Isotype:</b> IgG	<b>Full Name:</b> killer cell lectin-like receptor subfamily B, member 1A	
	<b>Calculated MW:</b> 25 kDa	

## Applications

**Tested Applications:**  
FC

**Species Specificity:**  
rat

## Background Information

CD161, also known as KLRB1 or NKR-P1A, is a type II transmembrane C-type lectin-like receptor and is expressed on the cell membrane as disulfide-linked homodimer (PMID: 8077657). It is expressed by the majority of NK cells and subsets of peripheral T cells, including both CD4+ and CD8+ T cells, and is expressed preferentially on adult T cells with a "memory" antigenic phenotype (PMID: 8077657; 22566826). Expression of CD161 correlates with the cytotoxic function of CD16+ NK cells, and ligation of CD161 with its ligand LLT1 inhibits NK cell cytotoxicity and cytokine secretion (PMID: 29686665).

## Storage

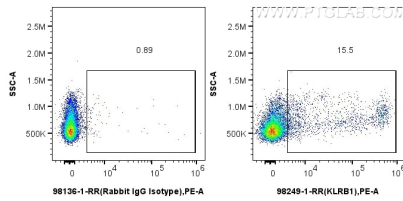
**Storage:**  
Store at -80°C.

**Storage Buffer:**  
PBS Only

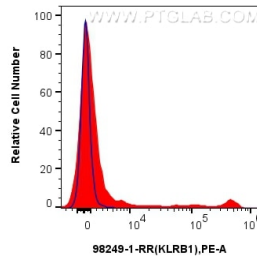
For technical support and original validation data for this product please contact:  
T: 1 (888) 4PTGLAB (1-888-478-4522) (toll free in USA), or 1(312) 455-8498 (outside USA)      E: proteintech@ptglab.com  
W: ptglab.com

This product is exclusively available under Proteintech Group brand and is not available to purchase from any other manufacturer.

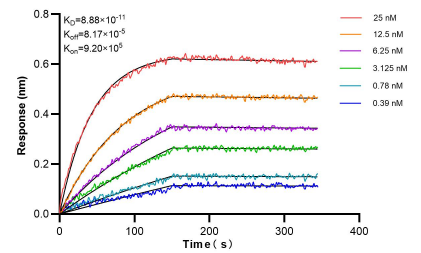
## Selected Validation Data



$1 \times 10^6$  rat splenocytes were surface stained with 0.25 ug Anti-Rat KLRB1/CD161 Rabbit Recombinant Antibody (98249-1-RR, Clone: 241840F3) or Rabbit IgG Isotype Control Recombinant Antibody (98136-1-RR, Clone: 240953C9), and PE-Conjugated Goat Anti-Rabbit IgG(H+L). Cells were not fixed. This data was developed using the same antibody clone with 98249-1-PBS in a different storage buffer formulation.



$1 \times 10^6$  rat splenocytes were surface stained with 0.25 ug Anti-Rat KLRB1/CD161 Rabbit Recombinant Antibody (98249-1-RR, Clone:241840F3)(red) or Rabbit IgG Isotype Control Recombinant Antibody (98136-1-RR, Clone: 240953C9) (blue) and PE-Conjugated Goat Anti-Rabbit IgG(H+L). Cells were not fixed. This data was developed using the same antibody clone with 98249-1-PBS in a different storage buffer formulation.



Bi-layer interferometry (BLI) kinetic assays of 98249-1-RR against Rat KLRB1/CD161 were performed. The affinity constant is 88.8 pM.