

For Research Use Only

Anti-Human CLEC10A/CD301 Rabbit Recombinant Antibody

Catalog Number: 98245-1-RR



Basic Information

Catalog Number: 98245-1-RR	GenBank Accession Number: BC039011	Purification Method: Protein A purification
Size: 100ug , 1000 µg/ml	GeneID (NCBI): 10462	CloneNo.: 241857C11
Source: Rabbit	UNIPROT ID: Q8IU9	
Isotype: IgG	Full Name: C-type lectin domain family 10, member A	
	Calculated MW: 316 aa, 35 kDa	

Applications

Tested Applications:
FC

Species Specificity:
human

Background Information

C-type lectin domain family 10 member A (CLEC10A), also known as CD301, macrophage galactose-type C-type lectin (MGL), DC-asialoglyco protein receptor (DC-ASGP-R) or human macrophage lectin (HML), is a type II transmembrane glycoprotein having a calcium-dependent carbohydrate recognition domain (PMID: 8598452; 11919201; 11698450). CLEC10A is expressed exclusively by myeloid professional antigen-presenting cells such as immature dendritic cells (DCs) and alternatively activated macrophages (PMID: 16998493). CLEC10A is a marker for human CD1c+ DCs (cDC2) (PMID: 29755453). It functions as an endocytic receptor for glycosylated antigens (PMID: 11919201).

Storage

Storage:
Store at 2 - 8°C. Stable for one year after shipment.

Storage Buffer:
PBS with 0.09% sodium azide, pH 7.3.

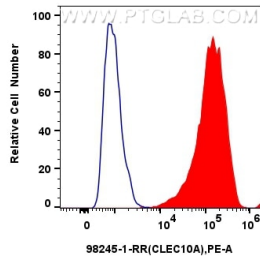
For technical support and original validation data for this product please contact:

T: 1 (888) 4PTGLAB (1-888-478-4522) (toll free in USA), or 1(312) 455-8498 (outside USA)

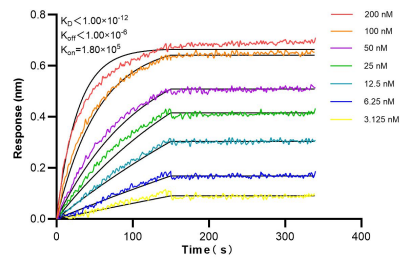
E: proteintech@ptglab.com
W: ptglab.com

This product is exclusively available under Proteintech Group brand and is not available to purchase from any other manufacturer.

Selected Validation Data



1×10^6 Human immature monocyte-derived dendritic cells were surface stained with 0.25 μg Anti-Human CLEC10A/CD301 Rabbit Recombinant Antibody (98245-1-RR, Clone: 241857C11) (red) or 0.25 μg Rabbit IgG Isotype Control Recombinant Antibody (98136-1-RR, Clone: 240953C9) (blue), and PE-Conjugated Goat Anti-Rabbit IgG(H+L). Cells were incubated with FC Receptor Block prior to staining. Cells were not fixed.



Biolayer interferometry (BLI) kinetic assays of 98245-1-RR against Human CLEC10A/CD301 were performed. The affinity constant is below 1 pM.