

For Research Use Only

Anti-Human CLEC10A/CD301 Rabbit Recombinant Antibody, PBS Only

Catalog Number: 98245-1-PBS



Basic Information

Catalog Number:

98245-1-PBS

Size:

1mg, 2 mg/ml

Source:

Rabbit

Isotype:

IgG

GenBank Accession Number:

BC039011

GeneID (NCBI):

10462

UNIPROT ID:

Q8IUN9

Full Name:

C-type lectin domain family 10, member A

Calculated MW:

316 aa, 35 kDa

Purification Method:

Protein A purification

CloneNo.:

241857C11

Applications

Tested Applications:

FC

Species Specificity:

human

Background Information

C-type lectin domain family 10 member A (CLEC10A), also known as CD301, macrophage galactose-type C-type lectin (MGL), DC-asialoglyco protein receptor (DC-ASGP-R) or human macrophage lectin (HML), is a type II transmembrane glycoprotein having a calcium-dependent carbohydrate recognition domain (PMID: 8598452; 11919201; 11698450). CLEC10A is expressed exclusively by myeloid professional antigen-presenting cells such as immature dendritic cells (DCs) and alternatively activated macrophages (PMID: 16998493). CLEC10A is a marker for human CD1c+ DCs (cDC2) (PMID: 29755453). It functions as an endocytic receptor for glycosylated antigens (PMID: 11919201).

Storage

Storage:

Store at -80°C.

Storage Buffer:

PBS Only

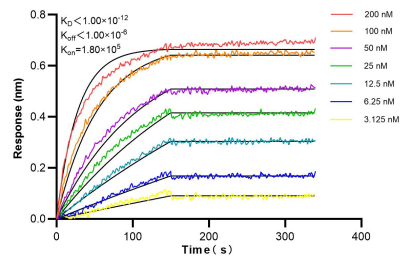
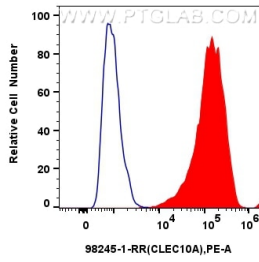
For technical support and original validation data for this product please contact:

T: 1 (888) 4PTGLAB (1-888-478-4522) (toll free in USA), or 1(312) 455-8498 (outside USA)

E: proteintech@ptglab.com
W: ptglab.com

This product is exclusively available under Proteintech Group brand and is not available to purchase from any other manufacturer.

Selected Validation Data



1x10⁶ Human immature monocyte-derived dendritic cells were surface stained with 0.25 ug Anti-Human CLEC10A/CD301 Rabbit Recombinant Antibody (98245-1-RR, Clone: 241857C11) (red) or 0.25 ug Rabbit IgG Isotype Control Recombinant Antibody (98136-1-RR, Clone: 240953C9) (blue), and PE-Conjugated Goat Anti-Rabbit IgG(H+L). Cells were incubated with FC Receptor Block prior to staining. Cells were not fixed. This data was developed using the same



Biolayer interferometry (BLI) kinetic assays of 98245-1-RR against Human CLEC10A/CD301 were performed. The affinity constant is below 1 pM.