

For Research Use Only

Anti-Human CD68 Rabbit Recombinant Antibody

Catalog Number: 98242-1-RR



Basic Information

Catalog Number: 98242-1-RR	GenBank Accession Number: BC015557	Purification Method: Protein A purification
Size: 100ug , 1000 µg/ml	GeneID (NCBI): 968	CloneNo.: 241810G1
Source: Rabbit	UNIPROT ID: P34810	
Isotype: IgG	Full Name: CD68 molecule	
	Calculated MW: 37 kDa	

Applications

Tested Applications:
FC

Species Specificity:
human

Background Information

CD68 is a type I transmembrane glycoprotein that is highly expressed by human monocytes and tissue macrophages. It belongs to the lysosomal/endosomal-associated membrane glycoprotein (LAMP) family and primarily localizes to lysosomes and endosomes with a smaller fraction circulating to the cell surface. CD68 is also a member of the scavenger receptor family. It may play a role in phagocytic activities of tissue macrophages.

Storage

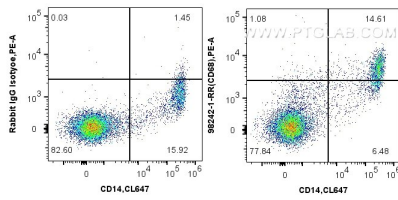
Storage:
Store at 2 - 8°C. Stable for one year after shipment.

Storage Buffer:
PBS with 0.09% sodium azide, pH 7.3.

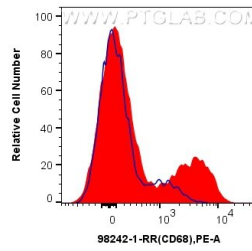
For technical support and original validation data for this product please contact:
T: 1 (888) 4PTGLAB (1-888-478-4522) (toll free in USA), or 1(312) 455-8498 (outside USA) E: proteintech@ptglab.com
W: ptglab.com

This product is exclusively available under Proteintech Group brand and is not available to purchase from any other manufacturer.

Selected Validation Data



1x10⁶ human PBMCs were surface stained with 0.25 ug Anti-Human CD68 Rabbit Recombinant Antibody (98242-1-RR, Clone: 241810G1) or Rabbit IgG Isotype Control Recombinant Antibody (98136-1-RR, Clone: 240953C9), and PE-Conjugated Goat Anti-Rabbit IgG(H+L). Cells were then stained with CoraLite® Plus 647 Anti-Human CD14. Cells were incubated with FC Receptor Block prior to staining. Cells were not fixed.



1x10⁶ human PBMCs were surface stained with 0.25 ug Anti-Human CD68 Rabbit Recombinant Antibody (98242-1-RR, Clone: 241810G1) (red) or Rabbit IgG Isotype Control Recombinant Antibody (98136-1-RR, Clone: 240953C9) (blue), and PE-Conjugated Goat Anti-Rabbit IgG(H+L). Cells were incubated with FC Receptor Block prior to staining. Cells were not fixed.