

For Research Use Only

Anti-Human INSR/CD220 Rabbit Recombinant Antibody, PBS Only

Catalog Number: 98227-1-PBS



Basic Information

Catalog Number: 98227-1-PBS	GenBank Accession Number: BC117172	Purification Method: Protein A purification
Size: 1mg, 2 mg/ml	GeneID (NCBI): 3643	CloneNo.: 241687A10
Source: Rabbit	UNIPROT ID: P06213	
Isotype: IgG	Full Name: INSR	

Applications

Tested Applications:
FC

Species Specificity:
human

Background Information

The biological effects of INS are mediated by a membrane-spanning cell surface receptor that has been shown to consist of disulfide-linked alpha-subunits (135 kDa) and beta-subunits (95 kDa) that are cleaved products of a common precursor. The binding of INS to the receptor extracellular domain results in intracellular activation of a tyrosine-specific kinase activity and the generation of signals that determine the cellular response (PMID: 2369896).

Storage

Storage:
Store at -80°C.
Storage Buffer:
PBS Only

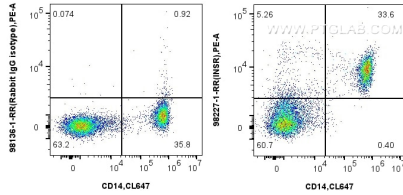
For technical support and original validation data for this product please contact:

T: 1 (888) 4PTGLAB (1-888-478-4522) (toll free in USA), or 1(312) 455-8498 (outside USA)

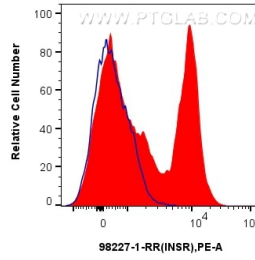
E: proteintech@ptglab.com
W: ptglab.com

This product is exclusively available under Proteintech Group brand and is not available to purchase from any other manufacturer.

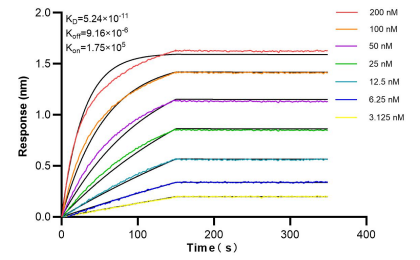
Selected Validation Data



1x10⁶ FC receptor blocked human PBMCs were surface stained with 0.25 ug Anti-Human INSR/CD220 Rabbit Recombinant Antibody (98227-1-RR, Clone: 241687A10) or 0.25 ug Rabbit IgG Isotype Control Recombinant Antibody (98136-1-RR, Clone: 240953C9), and PE-Conjugated Goat Anti-Rabbit IgG(H+L). Cells were co-stained with 0.25 ug CoraLite® Plus 647 Anti-Human CD14 Rabbit Recombinant Antibody (CL647-98040, Clone: 230332D7). Cells were not



1x10⁶ FC receptor blocked human PBMCs were surface stained with 0.25 ug Anti-Human INSR/CD220 Rabbit Recombinant Antibody (98227-1-RR, Clone:241687A10) (red) or 0.25 ug Rabbit IgG Isotype Control Recombinant Antibody (98136-1-RR, Clone: 240953C9) (blue), and PE-Conjugated Goat Anti-Rabbit IgG(H+L). Cells were not fixed. This data was developed using the same antibody clone with 98227-1-PBS in a different storage buffer formulation.



Biolayer interferometry (BLI) kinetic assays of 98227-1-RR against Human INSR/CD220 were performed. The affinity constant is 52.4 pM.