

For Research Use Only

# Anti-Human CD37 Rabbit Recombinant Antibody, PBS Only

Catalog Number: 98222-1-PBS



## Basic Information

Catalog Number:

98222-1-PBS

Size:

1mg, 2 mg/ml

Source:

Rabbit

Isotype:

IgG

GenBank Accession Number:

NM\_001774.3

GeneID (NCBI):

951

UNIPROT ID:

P11049-1

Full Name:

CD37 molecule

Calculated MW:

32kDa

Purification Method:

Protein A purification

CloneNo.:

242011D6

## Applications

Tested Applications:

FC

Species Specificity:

human

## Background Information

CD37 is a membrane protein of the tetraspanin superfamily which are characterized by the presence of four conserved transmembrane regions. Many of these members are expressed on leukocytes and have been implicated in signal transduction, cell-cell interactions, and cellular activation and development. CD37 plays a role in B-cell function, and may also play a role in T-cell-B-cell interactions (PMID: 10891477).

## Storage

Storage:

Store at -80°C.

Storage Buffer:

PBS Only

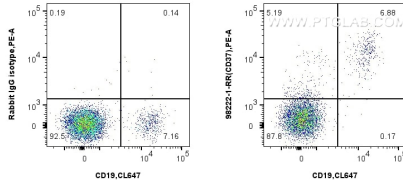
For technical support and original validation data for this product please contact:

T: 1 (888) 4PTGLAB (1-888-478-4522) (toll free in USA), or 1(312) 455-8498 (outside USA)

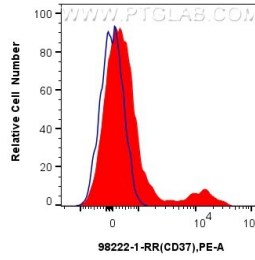
E: [proteintech@ptglab.com](mailto:proteintech@ptglab.com)  
W: [ptglab.com](http://ptglab.com)

This product is exclusively available under Proteintech Group brand and is not available to purchase from any other manufacturer.

## Selected Validation Data



1x10<sup>6</sup> human PBMCs were surface stained with 0.25 ug Anti-Human CD37 Rabbit Recombinant Antibody (98222-1-RR, Clone: 242011D6) or 0.25 ug Rabbit IgG Isotype Control Recombinant Antibody (98136-1-RR, Clone: 240953C9), and PE-Conjugated Goat Anti-Rabbit IgG(H+L). Cells were co-stained with CoraLite® Plus 647 Anti-Human CD19 (4G7). Cells were not fixed. Lymphocytes were gated. This data was developed using the same antibody clone with 98222-1-PBS in a



1x10<sup>6</sup> human PBMCs were surface stained with 0.25 ug Anti-Human CD37 Rabbit Recombinant Antibody (98222-1-RR, Clone: 242011D6) (red) or 0.25 ug Rabbit IgG Isotype Control Recombinant Antibody (98136-1-RR, Clone: 240953C9) (blue), and PE-Conjugated Goat Anti-Rabbit IgG(H+L). Cells were not fixed. Lymphocytes were gated. This data was developed using the same antibody clone with 98222-1-PBS in a different storage buffer formulation.