

For Research Use Only

Anti-Human SLAM/CD150 Rabbit Recombinant Antibody

Catalog Number: 98220-1-RR



Basic Information

Catalog Number: 98220-1-RR	GenBank Accession Number: NM_003037.5	Purification Method: Protein A purification
Size: 100ug , 1000 µg/ml	GeneID (NCBI): 6504	CloneNo.: 241800B12
Source: Rabbit	UNIPROT ID: Q13291-1	
Isotype: IgG	Full Name: signaling lymphocytic activation molecule family member 1	
	Calculated MW: 37kDa	

Applications

Tested Applications:
FC

Species Specificity:
human

Background Information

Signaling lymphocytic activation molecule (SLAM, also known as SLAMF1 or CD150) is a 70-95 kDa transmembrane glycoprotein that belongs to the immunoglobulin gene superfamily. SLAM is constitutively expressed on peripheral blood memory T-cells, T-cell clones, immature thymocytes and a proportion of B-cells, and is rapidly induced on naive T-cells after activation. SLAM is involved in T cell stimulation and cytokine production, and may play an important role in the regulation of immune responses to pathogens.

Storage

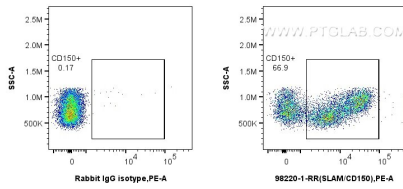
Storage:
Store at 2 - 8°C. Stable for one year after shipment.

Storage Buffer:
PBS with 0.09% sodium azide, pH 7.3.

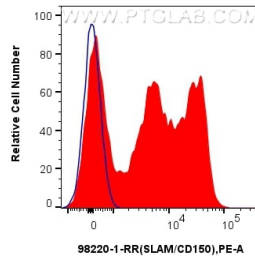
For technical support and original validation data for this product please contact:
T: 1 (888) 4PTGLAB (1-888-478-4522) (toll free in USA), or 1(312) 455-8498 (outside USA) E: proteintech@ptglab.com
W: ptglab.com

This product is exclusively available under Proteintech Group brand and is not available to purchase from any other manufacturer.

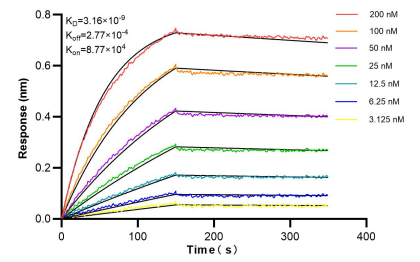
Selected Validation Data



1x10⁶ human PBMCs were surface stained with 0.25 ug Anti-Human SLAM/CD150 Rabbit Recombinant Antibody (98220-1-RR, Clone: 241800B12) or Rabbit IgG Isotype Control Recombinant Antibody (98136-1-RR, Clone: 240953C9), and PE-Conjugated Goat Anti-Rabbit IgG(H+L). Cells were not fixed. Lymphocytes were gated.



1x10⁶ human PBMCs were surface stained with 0.25 ug Anti-Human SLAM/CD150 Rabbit Recombinant Antibody (98220-1-RR, Clone: 241800B12) (red) or Rabbit IgG Isotype Control Recombinant Antibody (98136-1-RR, Clone: 240953C9) (blue), and PE-Conjugated Goat Anti-Rabbit IgG(H+L). Cells were not fixed. Lymphocytes were gated.



Bi-layer interferometry (BLI) kinetic assays of 98220-1-RR against Human SLAM/CD150 were performed. The affinity constant is 3.16 nM.