

For Research Use Only

Anti-Mouse CCL3 Rabbit Recombinant Antibody, PBS Only

Catalog Number: 98194-1-PBS



Basic Information

Catalog Number:

98194-1-PBS

Size:

1mg, 2 mg/ml

Source:

Rabbit

Isotype:

IgG

GenBank Accession Number:

NM_011337

GeneID (NCBI):

20302

UNIPROT ID:

P10855

Full Name:

chemokine (C-C motif) ligand 3

Calculated MW:

10kd

Purification Method:

Protein A purification

CloneNo.:

241695B10

Applications

Tested Applications:

FC (Intra)

Species Specificity:

mouse

Background Information

Chemokine (C-C motif) ligand 3 (CCL3), also known as MIP-1 α , belongs to the family of chemokines. CCL3 has been found in the central nervous system and its cognate receptors, CCR1 and CCR5, have been reported to be expressed by astrocytes, microglia and neurons. CCL3 and its receptors, CCR1 and CCR5, also contribute to the development of bone disease in multiple myeloma by supporting tumor growth and regulating osteoclast differentiation. CCL3 is also associated with the regulation of cell growth, angiogenesis, and metastasis of different tumors such as melanoma, renal cell carcinoma, and colorectal cancer. Moreover, CCL3 enhances cell migration and metastasis by up-regulating matrix metalloproteinase-2 (MMP)-2 expression in chondrosarcoma cells.

Storage

Storage:

Store at -80°C.

Storage Buffer:

PBS Only

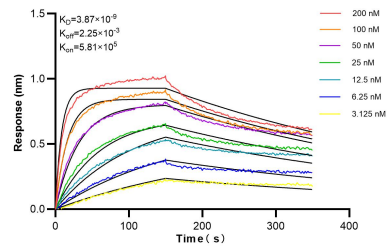
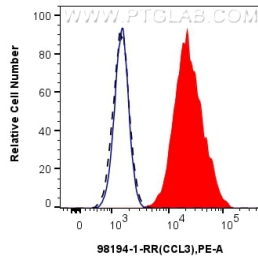
For technical support and original validation data for this product please contact:

T: 1 (888) 4PTGLAB (1-888-478-4522) (toll free in USA), or 1(312) 455-8498 (outside USA)

E: proteintech@ptglab.com
W: ptglab.com

This product is exclusively available under Proteintech Group brand and is not available to purchase from any other manufacturer.

Selected Validation Data



1×10^6 LPS and Brefeldin A treated J774A.1 cells were intracellularly stained with 0.25 ug Anti-Mouse CCL3 Rabbit Recombinant Antibody (98194-1-RR, Clone:241695B10) (red) or Rabbit IgG Isotype Control Recombinant Antibody (98136-1-RR, Clone: 240953C9) (blue), and PE-conjugated Goat Anti-Rabbit IgG. 1×10^6 untreated J774A.1 cells were intracellularly stained with 0.25 ug Anti-Mouse CCL3 Rabbit Recombinant Antibody (98194-1-RR, Clone: 241695B10)



Biolayer interferometry (BLI) kinetic assays of 98194-1-RR against Mouse CCL3 were performed. The affinity constant is 3.87 nM.