

For Research Use Only

E-selectin/CD62E Recombinant antibody, PBS Only (Detector)

Catalog Number: 98189-1-PBS



Basic Information

Catalog Number:

98189-1-PBS

Size:

1mg, 2 mg/ml

Source:

Rabbit

Isotype:

IgG

GenBank Accession Number:

BC142711

GeneID (NCBI):

6401

UNIPROT ID:

P16581

Full Name:

selectin E

Calculated MW:

610 aa, 67 kDa

Purification Method:

Protein A purification

CloneNo.:

241767H6

Applications

Tested Applications:

FC, Cytometric bead array, Sandwich ELISA, Indirect ELISA, Sample test

Species Specificity:

human

Product Information

98189-1-PBS targets E-selectin/CD62E as part of a matched antibody pair.

MP01636-1: 84887-2-PBS capture and 98189-1-PBS detection (validated in Cytometric bead array)

MP01636-3: 84887-3-PBS capture and 98189-1-PBS detection (validated in Sandwich ELISA)

Unconjugated rabbit recombinant monoclonal antibody in PBS only (BSA and azide free) storage buffer at a concentration of 1 mg/mL, ready for conjugation. Created using Proteintech's proprietary in-house recombinant technology. Recombinant production enables unrivalled batch-to-batch consistency, easy scale-up, and future security of supply.

This conjugation ready format makes antibodies ideal for use in many applications including: ELISAs, multiplex assays requiring matched pairs, mass cytometry, and multiplex imaging applications. Antibody use should be optimized by the end user for each application and assay.

Background Information

E-selectin, also known as CD62E or ELAM-1, is a member of the selectin family of adhesion molecules that also includes L-selectin and P-selectin. E-selectin is an inducible endothelial cell surface molecule. Its expression on endothelial cells is transcriptionally upregulated by various proinflammatory substances such as IL-1, TNF α and lipopolysaccharide (LPS). Besides, it can be secreted by endothelial cells, and can be detected in a soluble form (sE-selectin) in serum. During inflammation, E-selectin plays an important part in recruiting leukocytes to the site of injury. (PMID: 2827173; 1382417; 8943958)

Storage

Storage:

Store at -80°C.

Storage Buffer:

PBS Only

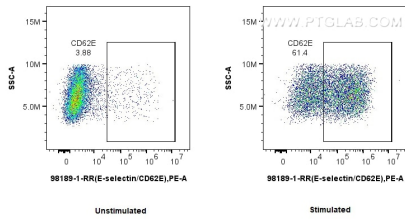
For technical support and original validation data for this product please contact:

T: 1 (888) 4PTGLAB (1-888-478-4522) (toll free in USA), or 1(312) 455-8498 (outside USA)

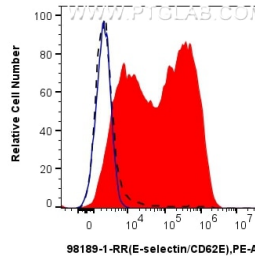
E: proteintech@ptglab.com
W: ptglab.com

This product is exclusively available under Proteintech Group brand and is not available to purchase from any other manufacturer.

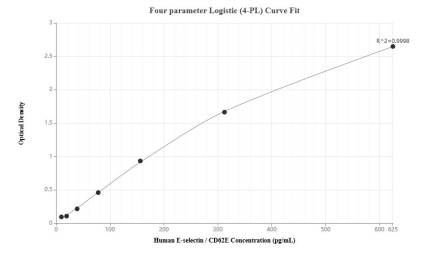
Selected Validation Data



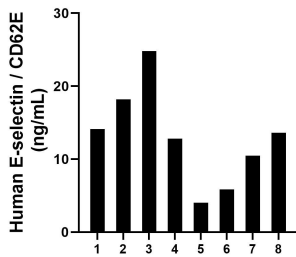
1x10⁶ untreated or TNF alpha treated HUVEC cells were surface stained with 0.25 ug Anti-Human E-selectin/CD62E Rabbit Recombinant Antibody (98189-1-RR, Clone: 241767H6) and PE-Conjugated Goat Anti-Rabbit IgG(H+L). Cells were not fixed. This data was developed using the same antibody clone with 98189-1-PBS in a different storage buffer formulation.



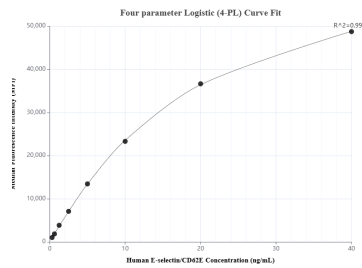
1x10⁶ TNF alpha treated HUVEC cells were surface stained with 0.25 ug Anti-Human E-selectin/CD62E Rabbit Recombinant Antibody (98189-1-RR, Clone: 241767H6) (red) or Rabbit IgG Isotype Control Recombinant Antibody (98136-1-RR, Clone: 240953C9) (blue), and PE-Conjugated Goat Anti-Rabbit IgG(H+L). 1x10⁶ untreated HUVEC cells were surface stained with 0.25 ug Anti-Human E-selectin/CD62E Rabbit Recombinant Antibody (98189-1-RR, Clone:



Sandwich ELISA standard curve of MP01636-3, Human E-selectin / CD62E Recombinant Matched Antibody Pair - PBS only. 84887-3-PBS was coated to a plate as the capture antibody and incubated with serial dilutions of standard RP02341. 98189-1-PBS was HRP conjugated as the detection antibody. Range: 9.77-625 pg/mL



Serum of eight individual healthy human donors was measured. The human E-selectin / CD62E concentration of detected samples was determined to be 12.99 ng/mL with a range of 4.01 - 24.83 ng/mL.



Cytometric bead array standard curve of MP01636-1, E-selectin / CD62E Recombinant Matched Antibody Pair, PBS Only. Capture antibody: 84887-2-PBS. Detection antibody: 98189-1-PBS. Standard: RP02341. Range: 0.313-40 ng/mL.