

For Research Use Only

Anti-Human CD29 Rabbit Recombinant Antibody

Catalog Number: 98188-1-RR



Basic Information

Catalog Number: 98188-1-RR	GenBank Accession Number: BC020057	Purification Method: Protein A purification
Size: 100ug , 1000 µg/ml	GeneID (NCBI): 3688	CloneNo.: 241685C10
Source: Rabbit	ENSEMBL Gene ID: ENSG00000150093	
Isotype: IgG	UNIPROT ID: P05556	
	Full Name: integrin, beta 1 (fibronectin receptor, beta polypeptide, antigen CD29 includes MDF2, MSK12)	
	Calculated MW: 88 kDa	

Applications

Tested Applications:
FC

Species Specificity:
human

Background Information

Integrin beta-1 (ITGB1), also named as CD29, is a 130 kDa single chain type I glycoprotein that is expressed in a heterodimeric complex with one of six distinct α subunits, comprising the very late activation antigen (VLA) subfamily of adhesion receptors. It is one of the essential surface molecules expressed on human MSC from bone marrow and other sources. The β 1 subunit is also broadly expressed on lymphocytes and monocytes, weakly expressed on granulocytes, and not expressed on erythrocytes. These receptors are involved in a variety of cell-cell and cell-matrix interactions.

Storage

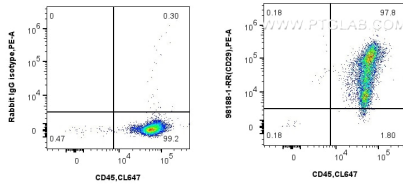
Storage:
Store at 2 - 8°C. Stable for one year after shipment.

Storage Buffer:
PBS with 0.09% sodium azide, pH 7.3.

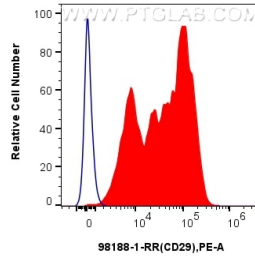
For technical support and original validation data for this product please contact:
T: 1 (888) 4PTGLAB (1-888-478-4522) (toll free in USA), or 1(312) 455-8498 (outside USA) E: proteintech@ptglab.com
W: ptglab.com

This product is exclusively available under Proteintech Group brand and is not available to purchase from any other manufacturer.

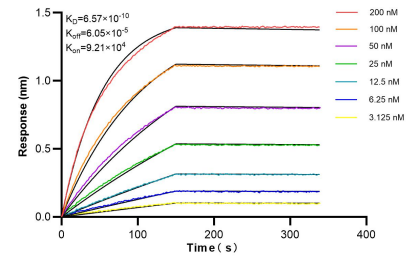
Selected Validation Data



1x10⁶ human PBMCs were surface stained with 0.25 ug Anti-Human CD29 Rabbit Recombinant Antibody (98188-1-RR, Clone: 241685C10) or Rabbit IgG Isotype Control Recombinant Antibody (98136-1-RR, Clone: 240953C9), and PE-Conjugated Goat Anti-Rabbit IgG(H+L). Cells were co-stained with CoraLite® Plus 647 Anti-Human CD45 Rabbit Recombinant Antibody. Cells were incubated with FC Receptor Block prior to staining. Cells were not fixed.



1x10⁶ human PBMCs were surface stained with 0.25 ug Anti-Human CD29 Rabbit Recombinant Antibody (98188-1-RR, Clone: 241685C10) (red) or Rabbit IgG Isotype Control Recombinant Antibody (98136-1-RR, Clone: 240953C9) (blue), and PE-Conjugated Goat Anti-Rabbit IgG(H+L). Cells were incubated with FC Receptor Block prior to staining. Cells were not fixed.



Bi-layer interferometry (BLI) kinetic assays of 98188-1-RR against Human CD29 were performed. The affinity constant is 0.657 nM.