

For Research Use Only

Anti-Human CD29 Rabbit Recombinant Antibody, PBS Only

Catalog Number: 98188-1-PBS



Basic Information

Catalog Number:

98188-1-PBS

Size:

1mg, 2 mg/ml

Source:

Rabbit

Isotype:

IgG

GenBank Accession Number:

BC020057

GeneID (NCBI):

3688

ENSEMBL Gene ID:

ENSG00000150093

UNIPROT ID:

P05556

Full Name:

integrin, beta 1 (fibronectin receptor, beta polypeptide, antigen CD29 includes MDF2, MSK12)

Calculated MW:

88 kDa

Purification Method:

Protein A purification

CloneNo.:

241685C10

Applications

Tested Applications:

FC

Species Specificity:

human

Background Information

Integrin beta-1 (ITGB1), also named as CD29, is a 130 kDa single chain type I glycoprotein that is expressed in a heterodimeric complex with one of six distinct α subunits, comprising the very late activation antigen (VLA) subfamily of adhesion receptors. It is one of the essential surface molecules expressed on human MSC from bone marrow and other sources. The β 1 subunit is also broadly expressed on lymphocytes and monocytes, weakly expressed on granulocytes, and not expressed on erythrocytes. These receptors are involved in a variety of cell-cell and cell-matrix interactions.

Storage

Storage:

Store at -80°C.

Storage Buffer:

PBS Only

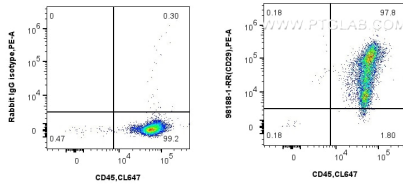
For technical support and original validation data for this product please contact:

T: 1 (888) 4PTGLAB (1-888-478-4522) (toll free in USA), or 1(312) 455-8498 (outside USA)

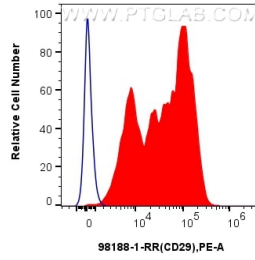
E: proteintech@ptglab.com
W: ptglab.com

This product is exclusively available under Proteintech Group brand and is not available to purchase from any other manufacturer.

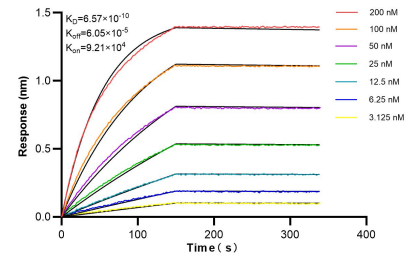
Selected Validation Data



1x10⁶ human PBMCs were surface stained with 0.25 ug Anti-Human CD29 Rabbit Recombinant Antibody (98188-1-RR, Clone: 241685C10) or Rabbit IgG Isotype Control Recombinant Antibody (98136-1-RR, Clone: 240953C9), and PE-Conjugated Goat Anti-Rabbit IgG(H+L). Cells were co-stained with CoraLite® Plus 647 Anti-Human CD45 Rabbit Recombinant Antibody. Cells were incubated with FC Receptor Block prior to staining. Cells were not fixed. This data was



1x10⁶ human PBMCs were surface stained with 0.25 ug Anti-Human CD29 Rabbit Recombinant Antibody (98188-1-RR, Clone: 241685C10) (red) or Rabbit IgG Isotype Control Recombinant Antibody (98136-1-RR, Clone: 240953C9) (blue), and PE-Conjugated Goat Anti-Rabbit IgG(H+L). Cells were incubated with FC Receptor Block prior to staining. Cells were not fixed. This data was developed using the same antibody clone with 98188-1-PBS in a different storage



Biolayer interferometry (BLI) kinetic assays of 98188-1-RR against Human CD29 were performed. The affinity constant is 0.657 nM.