

For Research Use Only

Anti-Human Siglec-7/CD328 Rabbit Recombinant Antibody, PBS Only

Catalog Number: 98183-1-PBS



Basic Information

Catalog Number: 98183-1-PBS	GenBank Accession Number: NM_014385.4	Purification Method: Protein A purification
Size: 1mg, 2 mg/ml	GeneID (NCBI): 27036	CloneNo.: 241525H1
Source: Rabbit	UNIPROT ID: Q9Y286-1	
Isotype: IgG	Full Name: sialic acid binding Ig-like lectin 7	
	Calculated MW: 51kDa	

Applications

Tested Applications:
FC

Species Specificity:
human

Background Information

Sialic acid binding Ig-like lectin 7 (Siglec-7), also known as CD328 or p75/AIRM-1, is a member of the Siglec family of glycan-recognition proteins. Siglec-7 is a type-I transmembrane protein consisting of three extracellular immunoglobulin-like domains that comprise an N-terminal V-set domain and two C2-set domains, a transmembrane region and a cytoplasmic tail containing two tyrosine residues embodied in immunoreceptor tyrosine-based inhibition motif-like motifs (PMID: 32322597; 10567377). It is mainly expressed on immune cells, with low levels on granulocytes, intermediate levels on monocytes, and relatively high levels on a major subset of natural killer cells and a minor subset of CD8+ T cells (PMID: 10567377). Siglec-7 is an inhibitory receptor that negatively regulates the function of NK cells and modulates the immune response through the interaction of sialic acid-containing ligands (PMID: 27312286).

Storage

Storage:
Store at -80°C.

Storage Buffer:
PBS Only

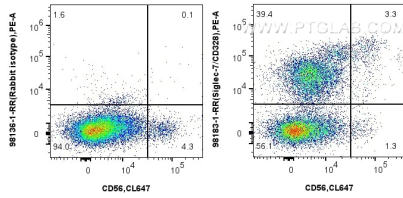
For technical support and original validation data for this product please contact:

T: 1 (888) 4PTGLAB (1-888-478-4522) (toll free in USA), or 1(312) 455-8498 (outside USA)

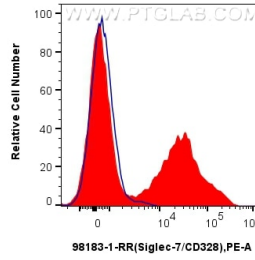
E: proteintech@ptglab.com
W: ptglab.com

This product is exclusively available under Proteintech Group brand and is not available to purchase from any other manufacturer.

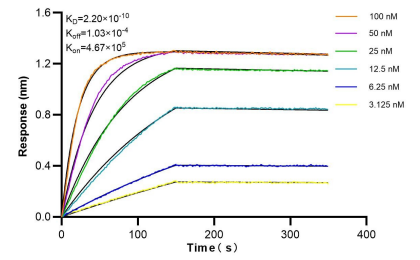
Selected Validation Data



1x10⁶ human peripheral blood leukocytes were surface stained with 0.25 ug Anti-Human Siglec-7/CD328 Rabbit Recombinant Antibody (98183-1-RR, Clone: 241525H1) or Rabbit IgG Isotype Control Recombinant Antibody (98136-1-RR, Clone: 240953C9) and PE-conjugated Goat Anti-Rabbit IgG. Cells were then stained with CoraLite® Plus 647 Anti-Human NCAM1/CD56. Cells were not fixed. This data was developed using the same antibody clone with 98183-1-PBS in a



1x10⁶ human peripheral blood leukocytes were surface stained with 0.25 ug Anti-Human Siglec-7/CD328 Rabbit Recombinant Antibody (98183-1-RR, Clone:241525H1) (red) or Rabbit IgG Isotype Control Recombinant Antibody (98136-1-RR, Clone: 240953C9) (blue) and PE-conjugated Goat Anti-Rabbit IgG. Cells were not fixed. This data was developed using the same antibody clone with 98183-1-PBS in a different storage buffer formulation.



Bioluminescence resonance energy transfer (BLI) kinetic assays of 98183-1-RR against Human Siglec-7/CD328 were performed. The affinity constant is 0.22 nM.