

For Research Use Only

Anti-Human CD48 Rabbit Recombinant Antibody

Catalog Number: 98170-1-RR



Basic Information

Catalog Number: 98170-1-RR	GenBank Accession Number: BC016182	Purification Method: Protein A purification
Size: 100ug , 1000 µg/ml	GeneID (NCBI): 962	CloneNo.: 241389F8
Source: Rabbit	UNIPROT ID: P09326	
Isotype: IgG	Full Name: CD48 molecule	
	Calculated MW: 43 kDa	

Applications

Tested Applications:
FC

Species Specificity:
human

Background Information

Signaling lymphocytic activation molecule family 2 (SLAMF2, CD48) is an adhesion and costimulatory molecule expressed constitutively on most hematopoietic cells, particularly in antigen-presenting cells (APC). CD48 is expressed on all the hematopoietic cells, both in humans and mice, except for murine neutrophils and long-term HSC. CD48 exists as both a membrane-bound (mCD48) and a soluble (sCD48) form. CD48 can activate T cells, antigen-presenting cells and granulocytes, by binding to CD2 or bacterial FimH, and through cell intrinsic effects. Interactions between CD48 and its high-affinity ligand CD244 are more complex, with both stimulatory and inhibitory outcomes. CD48 expression is increased in autoimmunity and allergy diseases, and anti-CD48 monoclonal antibodies have been shown to attenuate experimental autoimmune encephalomyelitis.

Storage

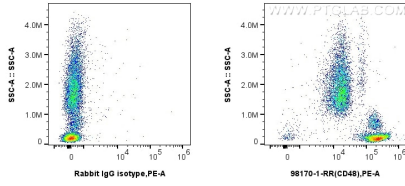
Storage:
Store at 2 - 8°C. Stable for one year after shipment.

Storage Buffer:
PBS with 0.09% sodium azide, pH 7.3.

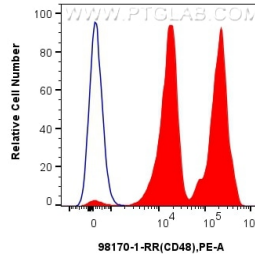
For technical support and original validation data for this product please contact:
T: 1 (888) 4PTGLAB (1-888-478-4522) (toll free in USA), or 1(312) 455-8498 (outside USA) E: proteintech@ptglab.com
W: ptglab.com

This product is exclusively available under Proteintech Group brand and is not available to purchase from any other manufacturer.

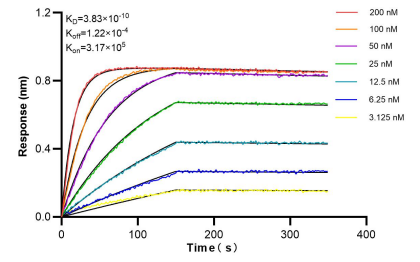
Selected Validation Data



1×10^6 human peripheral blood leukocytes were surface stained with 0.25 μg Anti-Human CD48 Rabbit Recombinant Antibody (98170-1-RR, Clone:241389F8) or 0.25 μg Isotype Control, and PE-Conjugated Goat Anti-Rabbit IgG(H+L). Cells were incubated with FC Receptor Block prior to staining. Cells were not fixed.



1×10^6 human peripheral blood leukocytes were surface stained with 0.25 μg Anti-Human CD48 Rabbit Recombinant Antibody (98170-1-RR, Clone:241389F8) (red) or 0.25 μg Isotype Control (blue), and PE-Conjugated Goat Anti-Rabbit IgG(H+L). Cells were incubated with FC Receptor Block prior to staining. Cells were not fixed.



Biacore BLI kinetic assays of 98170-1-RR against Human CD48 were performed. The affinity constant is 0.383 nM.