

For Research Use Only

Anti-Mouse CD200R1 Rabbit Recombinant Antibody

Catalog Number: 98155-1-RR



Basic Information

Catalog Number:

98155-1-RR

Size:

100ug , 1000 µg/ml

Source:

Rabbit

Isotype:

IgG

GenBank Accession Number:

NM_021325.3

GeneID (NCBI):

57781

UNIPROT ID:

Q9ES57

Full Name:

CD200 receptor 1

Calculated MW:

36 kDa

Purification Method:

Protein A purification

CloneNo.:

241453E7

Applications

Tested Applications:

FC

Species Specificity:

mouse

Background Information

Cell surface glycoprotein CD200 receptor 1 (CD200R1) is also called CD200R, CRTR2, MOX2R, and OX2R, and belongs to the CD200R family. CD200R1 is an inhibitory receptor for the CD200/OX2 cell surface glycoprotein. CD200R1 is highly glycosylated, containing ten potential N-glycosylation sites (PMID: 15187158). CD200R1 limits inflammation by inhibiting the expression of pro-inflammatory molecules including TNF-alpha, interferons, and inducible nitric oxide synthase (iNOS) in response to selected stimuli. As an immune inhibitory molecule, CD200R1 binds to CD200, ultimately leading to the inhibition of classical activation of macrophages and microglia (PMID: 24588829).

Storage

Storage:

Store at 2 - 8°C. Stable for one year after shipment.

Storage Buffer:

PBS with 0.09% sodium azide, pH 7.3.

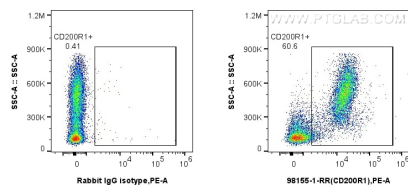
For technical support and original validation data for this product please contact:

T: 1 (888) 4PTGLAB (1-888-478-4522) (toll free in USA), or 1(312) 455-8498 (outside USA)

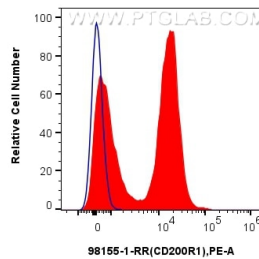
E: proteintech@ptglab.com
W: ptglab.com

This product is exclusively available under Proteintech Group brand and is not available to purchase from any other manufacturer.

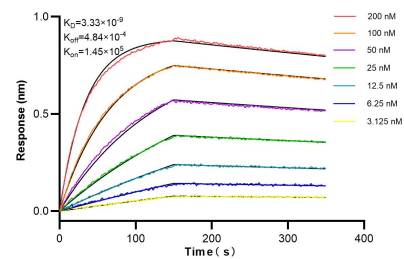
Selected Validation Data



1x10⁶ mouse bone marrow cells were surface stained with 0.25 ug Anti-Mouse CD200R1 Rabbit Recombinant Antibody (98155-1-RR, Clone: 241453E7) or Isotype Control, and PE-Conjugated Goat Anti-Rabbit IgG(H+L). Cells were not fixed.



1x10⁶ mouse bone marrow cells were surface stained with 0.25 ug Anti-Mouse CD200R1 Rabbit Recombinant Antibody (98155-1-RR, Clone: 241453E7) (red) or Isotype Control (blue), and PE-Conjugated Goat Anti-Rabbit IgG(H+L). Cells were not fixed.



Biolayer interferometry (BLI) kinetic assays of 98155-1-RR against Mouse CD200R1 were performed. The affinity constant is 3.33 nM.