

For Research Use Only

# Anti-Human TREM-1/CD354 Rabbit Recombinant Antibody

Catalog Number: 98154-1-RR



## Basic Information

<b>Catalog Number:</b> 98154-1-RR	<b>GenBank Accession Number:</b> NM_018643.5	<b>Purification Method:</b> Protein A purification
<b>Size:</b> 100ug , 1000 µg/ml	<b>GeneID (NCBI):</b> 54210	<b>CloneNo.:</b> 241279D10
<b>Source:</b> Rabbit	<b>UNIPROT ID:</b> Q9NP99-1	
<b>Isotype:</b> IgG	<b>Full Name:</b> triggering receptor expressed on myeloid cells 1	
	<b>Calculated MW:</b> 26kDa	

## Applications

**Tested Applications:**  
FC

**Species Specificity:**  
human

## Background Information

Triggering receptor expressed on myeloid cells 1 (TREM-1, also known as CD354) is a member of the immunoglobulin superfamily, which is expressed on neutrophils and monocytes. TREM1 plays a role in the innate immune system. TREM1 amplifies neutrophil and monocyte-mediated inflammatory responses triggered by bacterial and fungal infections by stimulating release of pro-inflammatory chemokines and cytokines, as well as increased surface expression of cell activation markers.

## Storage

**Storage:**  
Store at 2 - 8°C. Stable for one year after shipment.

**Storage Buffer:**  
PBS with 0.09% sodium azide, pH 7.3.

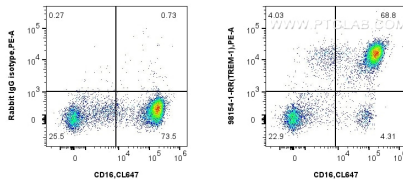
For technical support and original validation data for this product please contact:

T: 1 (888) 4PTGLAB (1-888-478-4522) (toll free in USA), or 1(312) 455-8498 (outside USA)

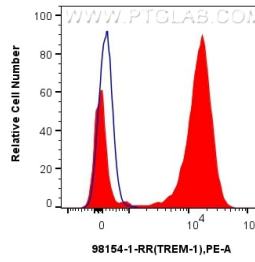
E: [proteintech@ptglab.com](mailto:proteintech@ptglab.com)  
W: [ptglab.com](http://ptglab.com)

This product is exclusively available under Proteintech Group brand and is not available to purchase from any other manufacturer.

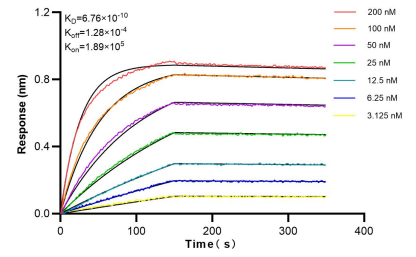
## Selected Validation Data



1x10<sup>6</sup> human peripheral blood leukocytes were surface stained with 0.25 ug Anti-Human TREM-1/CD354 Rabbit Recombinant Antibody (98154-1-RR, Clone: 241279D10) or Isotype Control, and PE-Conjugated Goat Anti-Rabbit IgG(H+L). Cells were co-stained with CoraLite® Plus 647 Anti-Human CD16. Cells were incubated with FC Receptor Block prior to staining. Cells were not fixed.



1x10<sup>6</sup> human peripheral blood leukocytes were surface stained with 0.25 ug Anti-Human TREM-1/CD354 Rabbit Recombinant Antibody (98154-1-RR, Clone: 241279D10)(red) or Isotype Control (blue), and PE-Conjugated Goat Anti-Rabbit IgG(H+L). Cells were incubated with FC Receptor Block prior to staining. Cells were not fixed.



Bi-layer interferometry (BLI) kinetic assays of 98154-1-RR against Human TREM-1/CD354 were performed. The affinity constant is 0.676 nM.