

For Research Use Only

Anti-Human CD122/IL-2RB Rabbit Recombinant Antibody

Catalog Number: 98151-1-RR



Basic Information

Catalog Number: 98151-1-RR	GenBank Accession Number: BC025691	Purification Method: Protein A purification
Size: 100ug , 1000 µg/ml	GeneID (NCBI): 3560	CloneNo.: 241677H7
Source: Rabbit	ENSEMBL Gene ID: ENSG00000100385	
Isotype: IgG	UNIPROT ID: P14784	
	Full Name: interleukin 2 receptor, beta	
	Calculated MW: 551 aa, 61 kDa	

Applications

Tested Applications:
FC

Species Specificity:
human

Background Information

The interleukin 2 receptor, which is involved in T cell-mediated immune responses, is present in 3 forms with respect to the ability to bind interleukin 2. The low-affinity form is a monomer of the alpha subunit and is not involved in signal transduction. The intermediate affinity form consists of an alpha/beta subunit heterodimer, while the high affinity form consists of an alpha/beta/gamma subunit heterotrimer. The beta subunit (IL2RB, also known as CD122 and p75) is involved in receptor-mediated endocytosis and transduces the mitogenic signals of interleukin 2.

Storage

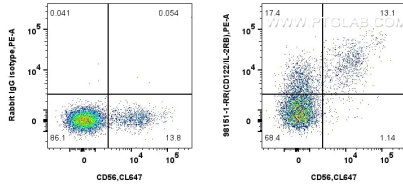
Storage:
Store at 2 - 8°C. Stable for one year after shipment.

Storage Buffer:
PBS with 0.09% sodium azide, pH 7.3.

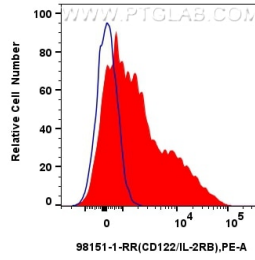
For technical support and original validation data for this product please contact:
T: 1 (888) 4PTGLAB (1-888-478-4522) (toll free in USA), or 1(312) 455-8498 (outside USA) E: proteintech@ptglab.com
W: ptglab.com

This product is exclusively available under Proteintech Group brand and is not available to purchase from any other manufacturer.

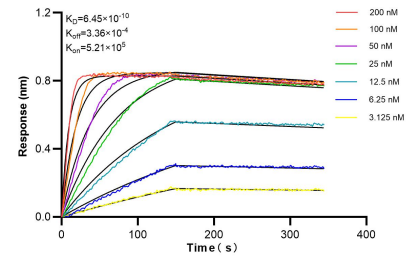
Selected Validation Data



1x10⁶ human PBMCs were surface stained with 0.25 ug Anti-Human CD122/IL-2RB Rabbit Recombinant Antibody (98151-1-RR, Clone: 241677H7) or 0.25 ug Rabbit IgG Isotype Control Recombinant Antibody (98136-1-RR, Clone: 240953C9), and PE-Conjugated Goat Anti-Rabbit IgG(H+L). Cells were co-stained with CoraLite® Plus 647 Anti-Human NCAM1/CD56 Rabbit Recombinant Antibody (CL647-98033, Clone: 240078A7). Cells were incubated with FC



1x10⁶ human PBMCs were surface stained with 0.25 ug Anti-Human CD122/IL-2RB Rabbit Recombinant Antibody (98151-1-RR, Clone: 241677H7) (red) or 0.25 ug Rabbit IgG Isotype Control Recombinant Antibody (98136-1-RR, Clone: 240953C9) (blue), and PE-Conjugated Goat Anti-Rabbit IgG(H+L). Cells were incubated with FC Receptor Block prior to staining. Cells were not fixed. Lymphocytes were gated.



Bi-layer interferometry (BLI) kinetic assays of 98151-1-RR against Human CD122/IL-2RB were performed. The affinity constant is 0.645 nM.