

For Research Use Only

Anti-Human IL-12RB1/CD212 Rabbit Recombinant Antibody

Catalog Number: 98149-1-RR



Basic Information

Catalog Number: 98149-1-RR	GenBank Accession Number: BC029121	Purification Method: Protein A purification
Size: 100ug , 1000 µg/ml	GeneID (NCBI): 3594	CloneNo.: 241661H1
Source: Rabbit	UNIPROT ID: P42701	
Isotype: IgG	Full Name: interleukin 12 receptor, beta 1	
	Calculated MW: 662 aa, 73 kDa	

Applications

Tested Applications:
FC

Species Specificity:
human

Background Information

Interleukin-12 receptor subunit beta-1 (IL-12RB1), also named as CD212, is a 662 amino acid protein, which contains 5 fibronectin type-III domains and belongs to the type I cytokine receptor family. IL-12RB1 localizes in the membrane and functions as an interleukin receptor which binds IL-12 with low affinity and is involved in IL-12 transduction. Associated with IL-12RB2 it forms a functional, high affinity receptor for IL-12. It can also associate with IL23R to form the interleukin-23 receptor which functions in IL-23 signal transduction probably through activation of the Jak-Stat signaling cascade.

Storage

Storage:
Store at 2 - 8°C. Stable for one year after shipment.

Storage Buffer:
PBS with 0.09% sodium azide, pH 7.3.

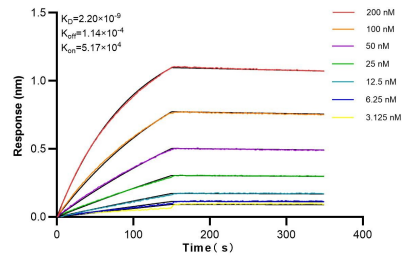
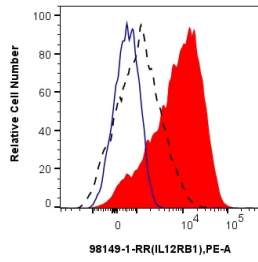
For technical support and original validation data for this product please contact:

T: 1 (888) 4PTGLAB (1-888-478-4522) (toll free in USA), or 1(312) 455-8498 (outside USA)

E: proteintech@ptglab.com
W: ptglab.com

This product is exclusively available under Proteintech Group brand and is not available to purchase from any other manufacturer.

Selected Validation Data



1x10⁶ anti-CD3/CD28 treated human PBMCs were surface stained with 0.25 ug Anti-Human IL-12RB1/CD212 Rabbit Recombinant Antibody (98149-1-RR, Clone: 241661H1) (red) or Isotype Control (blue) and PE-Conjugated Goat Anti-Rabbit IgG(H+L). 1x10⁶ untreated human PBMCs were surface stained with 0.25 ug Anti-Human IL-12RB1/CD212 Rabbit Recombinant Antibody (98149-1-RR, Clone: 241661H1) (black, dashed) and PE-Conjugated Goat Anti-Rabbit IgG(H+L). Cells were not

Biolayer interferometry (BLI) kinetic assays of 98149-1-RR against Human IL-12RB1/CD212 were performed. The affinity constant is 2.2 nM.