

For Research Use Only

# Anti-Human IL-12RB1/CD212 Rabbit Recombinant Antibody, PBS Only

Catalog Number: 98149-1-PBS



## Basic Information

<b>Catalog Number:</b> 98149-1-PBS	<b>GenBank Accession Number:</b> BC029121	<b>Purification Method:</b> Protein A purification
<b>Size:</b> 1mg , 2 mg/ml	<b>GeneID (NCBI):</b> 3594	<b>CloneNo.:</b> 241661H1
<b>Source:</b> Rabbit	<b>UNIPROT ID:</b> P42701	
<b>Isotype:</b> IgG	<b>Full Name:</b> interleukin 12 receptor, beta 1	
	<b>Calculated MW:</b> 662 aa, 73 kDa	

## Applications

**Tested Applications:**  
FC

**Species Specificity:**  
human

## Background Information

Interleukin-12 receptor subunit beta-1 (IL-12RB1), also named as CD212, is a 662 amino acid protein, which contains 5 fibronectin type-III domains and belongs to the type I cytokine receptor family. IL-12RB1 localizes in the membrane and functions as an interleukin receptor which binds IL-12 with low affinity and is involved in IL-12 transduction. Associated with IL-12RB2 it forms a functional, high affinity receptor for IL-12. It can also associate with IL23R to form the interleukin-23 receptor which functions in IL-23 signal transduction probably through activation of the Jak-Stat signaling cascade.

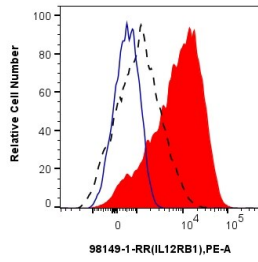
## Storage

**Storage:**  
Store at -80°C.  
**Storage Buffer:**  
PBS Only

For technical support and original validation data for this product please contact:  
T: 1 (888) 4PTGLAB (1-888-478-4522) (toll free in USA), or 1(312) 455-8498 (outside USA)      E: proteintech@ptglab.com  
W: ptglab.com

This product is exclusively available under Proteintech Group brand and is not available to purchase from any other manufacturer.

## Selected Validation Data



1x10<sup>6</sup> anti-CD3/CD28 treated human PBMCs were surface stained with 0.25 ug Anti-Human IL-12RB1/CD212 Rabbit Recombinant Antibody (98149-1-RR, Clone: 241661H1) (red) or Isotype Control (blue) and PE-Conjugated Goat Anti-Rabbit IgG(H+L). 1x10<sup>6</sup> untreated human PBMCs were surface stained with 0.25 ug Anti-Human IL-12RB1/CD212 Rabbit Recombinant Antibody (98149-1-RR, Clone: 241661H1) (black, dashed) and PE-Conjugated Goat Anti-Rabbit IgG(H+L). Cells were not