

For Research Use Only

# Anti-Human CD38 Rabbit Recombinant Antibody

Catalog Number: 98148-1-RR



## Basic Information

<b>Catalog Number:</b> 98148-1-RR	<b>GenBank Accession Number:</b> BC007964	<b>Purification Method:</b> Protein A purification
<b>Size:</b> 100ug , 1000 µg/ml	<b>GeneID (NCBI):</b> 952	<b>CloneNo.:</b> 241246F9
<b>Source:</b> Rabbit	<b>ENSEMBL Gene ID:</b> ENSG00000004468	
<b>Isotype:</b> IgG	<b>UNIPROT ID:</b> P28907	
	<b>Full Name:</b> CD38 molecule	
	<b>Calculated MW:</b> 300 aa, 34 kDa	

## Applications

**Tested Applications:**  
FC

**Species Specificity:**  
human

## Background Information

CD38, also known as ADP-ribosyl cyclase 1, is a type II transmembrane glycoprotein with a short N-terminal cytoplasmic tail, a single membrane-spanning domain, and a C-terminal extracellular region with four N-glycosylation sites (PMID: 2319135). The extracellular domain of CD38 has bifunctional enzyme activities that catalyze synthesis of cyclic ADP ribose from nicotinamide adenine dinucleotide (NAD) and hydrolysis of cyclic ADP ribose to adenosine diphosphoribose (PMID: 10636863). CD38 is expressed on a variety of hematopoietic and non-hematopoietic cells and is involved in diverse processes such as generation of calcium-mobilizing metabolites, cell activation, and chemotaxis (PMID: 25938500).

## Storage

**Storage:**  
Store at 2 - 8°C. Stable for one year after shipment.  
**Storage Buffer:**  
PBS with 0.09% sodium azide, pH 7.3.

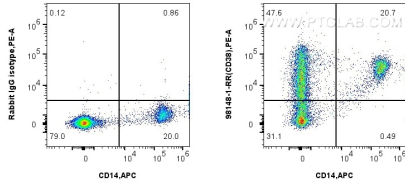
For technical support and original validation data for this product please contact:

T: 1 (888) 4PTGLAB (1-888-478-4522) (toll free in USA), or 1(312) 455-8498 (outside USA)

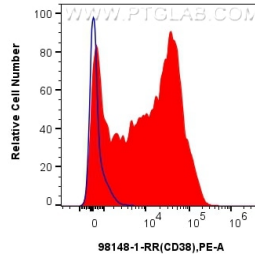
E: [proteintech@ptglab.com](mailto:proteintech@ptglab.com)  
W: [ptglab.com](http://ptglab.com)

**This product is exclusively available under Proteintech Group brand and is not available to purchase from any other manufacturer.**

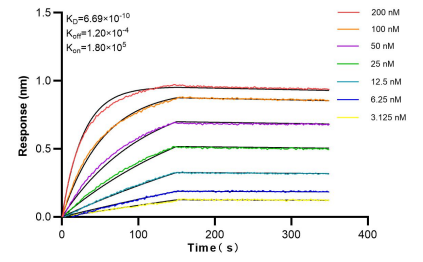
## Selected Validation Data



1x10<sup>6</sup> human PBMCs were surface stained with 0.25 ug Anti-Human CD38 Rabbit Recombinant Antibody (98148-1-RR, Clone:241246F9) or Isotype Control and PE-Conjugated Goat Anti-Rabbit IgG(H+L). Cells were co-stained with APC Anti-Human CD14 (261C) (APC-65246, Clone: 261C). Cells were incubated with FC Receptor Block prior to staining. Cells were not fixed.



1x10<sup>6</sup> human PBMCs were surface stained with 0.25 ug Anti-Human CD38 Rabbit Recombinant Antibody (98148-1-RR, Clone:241246F9) or Isotype Control, and PE-Conjugated Goat Anti-Rabbit IgG(H+L). Cells were incubated with FC Receptor Block prior to staining. Cells were not fixed.



Bi-layer interferometry (BLI) kinetic assays of 98148-1-RR against Human CD38 were performed. The affinity constant is 0.669 nM.