

For Research Use Only

Anti-Human CD38 Rabbit Recombinant Antibody, PBS Only

Catalog Number: 98148-1-PBS



Basic Information

Catalog Number: 98148-1-PBS	GenBank Accession Number: BC007964	Purification Method: Protein A purification
Size: 1mg, 2 mg/ml	GeneID (NCBI): 952	CloneNo.: 241246F9
Source: Rabbit	ENSEMBL Gene ID: ENSG00000004468	
Isotype: IgG	UNIPROT ID: P28907	
	Full Name: CD38 molecule	
	Calculated MW: 300 aa, 34 kDa	

Applications

Tested Applications:
FC

Species Specificity:
human

Background Information

CD38, also known as ADP-ribosyl cyclase 1, is a type II transmembrane glycoprotein with a short N-terminal cytoplasmic tail, a single membrane-spanning domain, and a C-terminal extracellular region with four N-glycosylation sites (PMID: 2319135). The extracellular domain of CD38 has bifunctional enzyme activities that catalyze synthesis of cyclic ADP ribose from nicotinamide adenine dinucleotide (NAD) and hydrolysis of cyclic ADP ribose to adenosine diphosphoribose (PMID: 10636863). CD38 is expressed on a variety of hematopoietic and non-hematopoietic cells and is involved in diverse processes such as generation of calcium-mobilizing metabolites, cell activation, and chemotaxis (PMID: 25938500).

Storage

Storage:
Store at -80°C.

Storage Buffer:
PBS Only

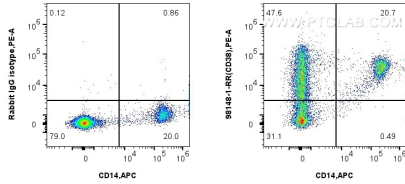
For technical support and original validation data for this product please contact:

T: 1 (888) 4PTGLAB (1-888-478-4522) (toll free in USA), or 1(312) 455-8498 (outside USA)

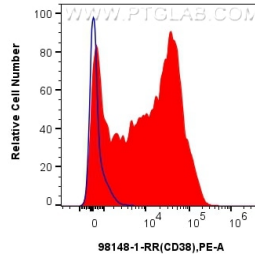
E: proteintech@ptglab.com
W: ptglab.com

This product is exclusively available under Proteintech Group brand and is not available to purchase from any other manufacturer.

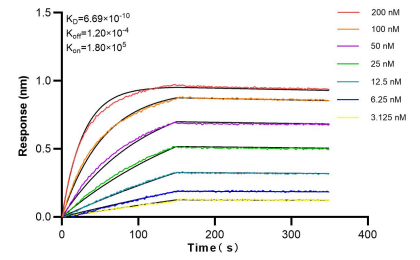
Selected Validation Data



1x10⁶ human PBMCs were surface stained with 0.25 ug Anti-Human CD38 Rabbit Recombinant Antibody (98148-1-RR, Clone:241246F9) or Isotype Control and PE-Conjugated Goat Anti-Rabbit IgG(H+L). Cells were co-stained with APC Anti-Human CD14 (261C) (APC-65246, Clone: 261C). Cells were incubated with FC Receptor Block prior to staining. Cells were not fixed. This data was developed using the same antibody clone with 98148-1-PBS in a different storage buffer



1x10⁶ human PBMCs were surface stained with 0.25 ug Anti-Human CD38 Rabbit Recombinant Antibody (98148-1-RR, Clone:241246F9) or Isotype Control, and PE-Conjugated Goat Anti-Rabbit IgG(H+L). Cells were incubated with FC Receptor Block prior to staining. Cells were not fixed. This data was developed using the same antibody clone with 98148-1-PBS in a different storage buffer formulation.



Bi-layer interferometry (BLI) kinetic assays of 98148-1-RR against Human CD38 were performed. The affinity constant is 0.669 nM.