

For Research Use Only

# Anti-Human CD157 Rabbit Recombinant Antibody

Catalog Number: 98146-1-RR



## Basic Information

<b>Catalog Number:</b> 98146-1-RR	<b>GenBank Accession Number:</b> BC012095	<b>Purification Method:</b> Protein A purification
<b>Size:</b> 100ug , 1000 µg/ml	<b>GeneID (NCBI):</b> 683	<b>CloneNo.:</b> 241424H5
<b>Source:</b> Rabbit	<b>UNIPROT ID:</b> Q10588	
<b>Isotype:</b> IgG	<b>Full Name:</b> bone marrow stromal cell antigen 1	
	<b>Calculated MW:</b> 318 aa, 36 kDa	

## Applications

**Tested Applications:**  
FC

**Species Specificity:**  
human

## Background Information

CD157, also known as bone marrow stromal cell antigen 1 (BST-1), or ADP-ribosyl cyclase 2, is a glycosyl phosphatidylinositol-anchored protein that stimulates pre-B-cell growth and has adenosine diphosphate (ADP)-ribosyl cyclase and cyclic ADP-ribose (cADPR) hydrolase activity (PMID: 9473467, 11866528). The two enzymatic activities are responsible for the synthesis and hydrolysis of cADPR, a novel second messenger of calcium release from intracellular calcium stores.

## Storage

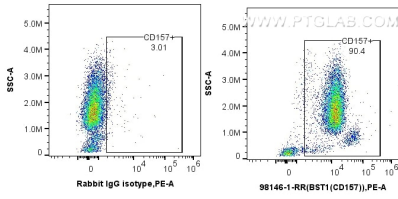
**Storage:**  
Store at 2 - 8°C. Stable for one year after shipment.

**Storage Buffer:**  
PBS with 0.09% sodium azide, pH 7.3.

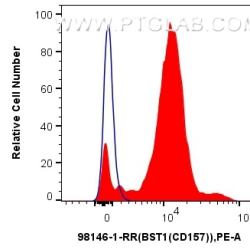
For technical support and original validation data for this product please contact:  
T: 1 (888) 4PTGLAB (1-888-478-4522) (toll free in USA), or 1(312) 455-8498 (outside USA)      E: proteintech@ptglab.com  
W: ptglab.com

This product is exclusively available under Proteintech Group brand and is not available to purchase from any other manufacturer.

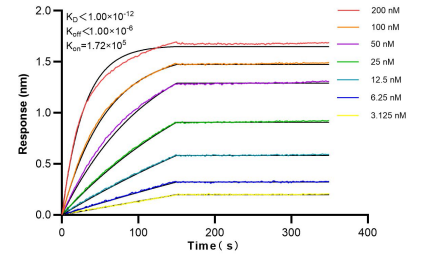
## Selected Validation Data



1x10<sup>6</sup> human peripheral blood leukocytes were surface stained with 0.15 ug Anti-Human CD157 Rabbit Recombinant Antibody (98146-1-RR, Clone: 241424H5), or Isotype Control and PE-Conjugated Goat Anti-Rabbit IgG(H+L). Cells were incubated with FC Receptor Block prior to fixing and staining. Cells were not fixed.



1x10<sup>6</sup> human peripheral blood leukocytes were surface stained with 0.15 ug Anti-Human CD157 Rabbit Recombinant Antibody (98146-1-RR, Clone: 241424H5) (red) or Isotype Control (blue), and PE-Conjugated Goat Anti-Rabbit IgG(H+L). Cells were incubated with FC Receptor Block prior to fixing and staining. Cells were not fixed.



Bi-layer interferometry (BLI) kinetic assays of 98146-1-RR against Human CD157 were performed. The affinity constant is below 1 pM.